

*Popular***Design**

Mill & Cabinet, Inc.



Specification Guide

Specification Guide

	Page
Introduction	I-VI
Walls	1-11
Wall Modifications	10-11
Base	12-20
Base Modifications	18-20
Utility	21-25
Utility Modifications	24-25
Vanity	26-32
Vanity Modifications	31-32
Office	33-37
Office Modifications	36-37
Molding	38
Accessories	39-44
Index	45-47

Statement

We at Popular Design Mill & Cabinet, Inc., thank you for allowing us to partner with you in creating fine cabinetry. We value you as a customer and want you to experience our commitment to quality, excellence and courtesy.

We are proud to offer some of the finest cabinets available. Produced with high-grade materials and with the utmost attention to detail, we strive to ensure the perfection and beauty of each piece. Along with being dedicated to this quality we also strive for affordability. As a matter of fact, customer service is our number one goal. From the time an order is received until a job is complete, we make sure the process is handled with integrity and reliability.

We ask you to hold us accountable to the standard that we have set for ourselves. We consider each order you place with us an investment in our relationship, and we are committed to building the relationship we have with you.

Again, we would like to hear your feedback. In order for us to keep our set standard, please let us know of your experience with our service and products. Keeping this door of communication open allows us to know and fill your business needs.

Thank you for your friendship and for your business.

Sincerely,



Stanley Kelsch, President

Limited Lifetime Warranty

Manufacturer hereby warrants to the original purchaser* that all products manufactured and sold by Manufacturer are free from defects in material and workmanship for the life of the product.

MANUFACTURER MAKES NO OTHER WARRANTY, EXPRESS OR IMPLIED, AND MAKES NO WARRANTY OF MERCHANTABILITY OR OF FITNESS FOR ANY PARTICULAR PURPOSE. The coverage provided in this document is exclusive to the original purchaser, is nontransferable, and is predicated upon the criteria outlined herein:

Hinges: Under normal use, the hinges used in the Manufacturers' products will provide a lifetime of efficient operation. They have a maximum operational range when fully open (typically 105°). In the event that the door is opened beyond the maximum published opening, product failure may occur and is not covered under this warranty.

Drawer Guides: The drawer guides used in Manufacturers' products have a static load rating of 75 lbs. User should be aware that the aforementioned load rating is established with the weight evenly distributed throughout the drawer. Unevenly distributed weight, and/or improper use of the drawer can result in failure of the drawer guide and is not covered under this warranty.

Finish: The protective top-coat applied to Manufacturers' products is designed to meet and/or exceed the requirements of the Kitchen Cabinet Manufacturer's Association. As with any quality finish, it will wear with age and use, depending upon the owner's maintenance of the product. Exposure to abrasive chemicals, solvents, excessive ultraviolet light, and moisture can cause the finish to fail. Due to the variables involved in the maintenance of the finish, the Warranty on this aspect of the product is limited to two years from the original date of purchase. No Warranty is provided for Unfinished cabinetry and/or accessories.

Wood Materials: Manufacturer utilizes both solid wood and composite (Veneer, MDF, Melamine, Laminate, etc.) materials in its products. While made of the same species, veneered materials composition causes it to receive stain differently than solid wood. Larger cabinet and accessory components are typically produced out of multiple pieces of material and while that material may be from the same wood species, the individual pieces will display some inherent color variation beyond the control of the Manufacturer. Due to normal variations in the density and graining of wood itself, the same stain applied to another piece of the same wood specie may result in a somewhat different appearance. This variation can be greater when comparing solid wood to veneers. Additionally, wood species in all finishes will exhibit color changes when exposed to all types of light (natural & man-made). It is the general nature of wood to darken or yellow over time. Natural aging is not hindered by the finishing process. Color variations are also caused by the assortment of minerals found in the earth in which the tree was grown. The level of mineral absorption will vary in a given piece of wood. All wood species will exhibit the following attributes; sap runs, knots and pinholes. These characteristics will occur in varying degrees dependent upon the type of wood specie selected. It should be noted that cabinets and accessories that have a Natural (no stain color or paint color applied to them) or Lighter Stain Finish will typically display significant color variation; such color variation shall not be considered "defective". This Warranty does not cover the effects of light and aging upon MANUFACTURER product.

*"Original Purchaser" is defined as the owner of the real property at the time the cabinets were originally installed.

IMPORTANT: See Warranty Guidelines and Conditions on next page.

Warranty Guidelines & Conditions

This Warranty is provided expressly in place of all other warranties and representations, expressed or implied, and all other obligations or liabilities of Manufacturer. This Warranty does not cover products that are misused, mishandled, improperly installed, abused, improperly stored, that have been subject to negligence or accident, or altered or repaired outside the factory of Manufacturer in any way. Additionally, this Warranty does not cover products that are subjected to extreme temperatures or extreme moisture levels. Product that has been changed, modified, reconstructed or altered beyond its original manufacture shall not be covered under this Warranty. This Warranty does not cover products that are not used per the Manufacturer's intent and design, nor does it cover products that are not maintained as specified by the Manufacturer.

After Manufacturer has had an opportunity to inspect the product, Manufacturer, at its sole discretion, will determine whether a defect exists. In the event Manufacturer determines a defect exists, the sole remedy to the original purchaser is either repair or replacement of the product, which shall be determined by Manufacturer. Replacement products provided under this Warranty may not exactly match original products due to the passage of time, natural aging process, and evolution of Manufacturer's product offering. This Warranty is conditioned on the original purchaser's proper treatment of the product after delivery. Manufacturer shall not be liable for consequential, indirect, or incidental damages. This Warranty does not cover delivery costs or labor charges to remove or reinstall products or any related components (including countertops). This Warranty gives you specific legal rights, and you may also have other rights, which may vary from state to state. Manufacturer reserves the right to change, without notice, design specifications and materials as conditions require and as improvements are developed. Manufacturer is under no obligation to incorporate such changes in products previously manufactured. Manufacturer may, at its sole discretion, substitute a similar product for replacement of a previously manufactured product.

*Ownership of the product must be registered with Manufacturer within 60 days of the date that the order shipped from Manufacturer's facility. Failure to register ownership voids this Warranty. Proof of purchase satisfactory to Manufacturer to indicate that you are the original purchaser is required to obtain benefits under this Warranty.

Jurisdiction and venue for any dispute regarding the product sold, this Warranty or any other matter that may arise between Manufacturer and original purchaser shall be Salt Lake County, Utah, exclusively. The terms and conditions of this Warranty and any dispute regarding the same shall be governed by and interpreted under the case and statutory law of the State of Utah.

All Claims for defective goods must be submitted to Manufacturer in writing and must specify the defects present in the product. Manufacturer may, at their discretion, require the product to be returned for inspection, with transportation charges prepaid by original purchaser, prior to honoring a claim. Do not return any product to Manufacturer without prior written authorization. All claims must be either hand delivered or mailed to the Manufacturer at the following address:

PopularDesign
Mill & Cabinet, Inc.

2821 W Parkway Blvd, West Valley City, UT 84119
801-966-8978 | popular-design.com

*"Original Purchaser" is defined as the owner of the real property at the time the cabinets were originally installed.

Cabinet Information

Our cabinets are made with a 3/4" fused melamine, have a 1/4" let in back and are held together with confirmat screws. All of our cabinets come standard with adjustable shelves, a finished fir down on top of all upper cabinets for molding applications, and an integrated toe kick on all lower cabinets.

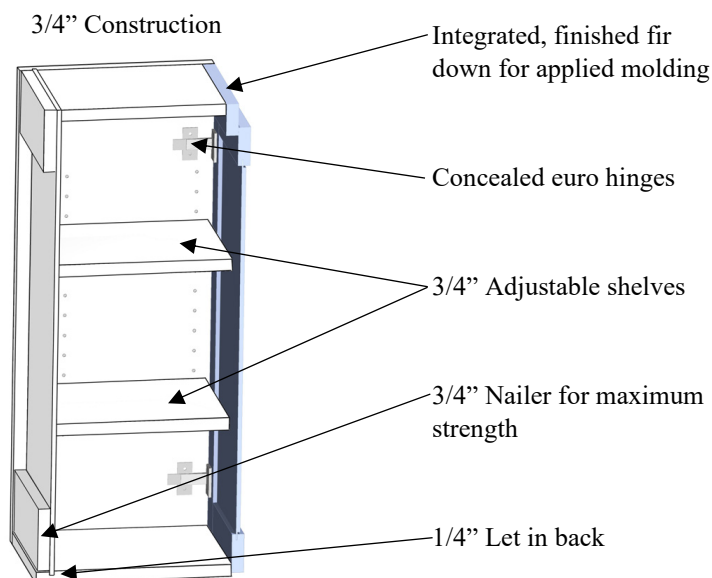
Our standard hinge is a 120° concealed hinge and has a wide range of adjustment.

Our standard drawer boxes are 3/4" melamine construction held with confirmat screws and a 1/4" let in bottom. All drawer boxes and roll out trays may be upgrade to a 5/8" Baltic birch plywood dovetail box.

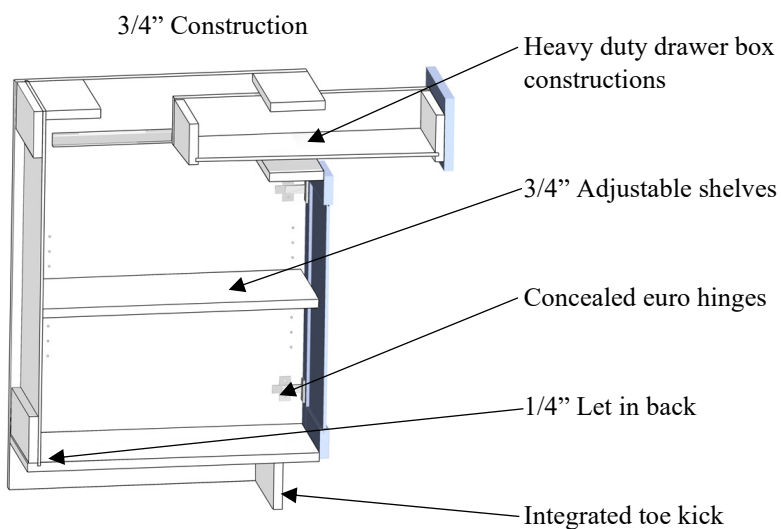
Our standard drawer box comes with a 3/4" extension slide with a 75 lb. weight rating, but may be upgraded to a full extension slide with a 100 lb. weight rating. Any drawer box or roll out tray that is 27" wide or greater will come with full extension slides with the 100 lb. weight rating.

Our dovetail drawers use an undermount, full extension, soft close slide with a 100 lb. weight rating.

Wall/Upper Construction

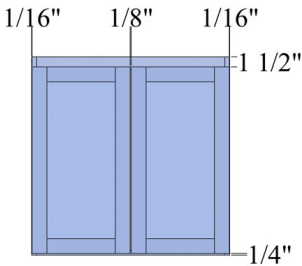


Base/Lower Construction

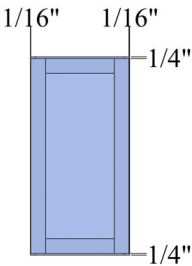


Cabinet Door Reveals

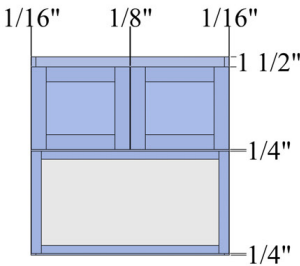
Standard Wall



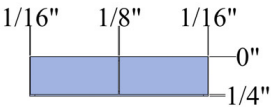
No Fir Down



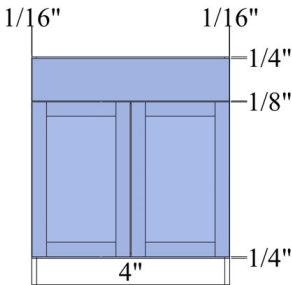
MO



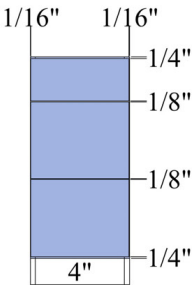
WDO



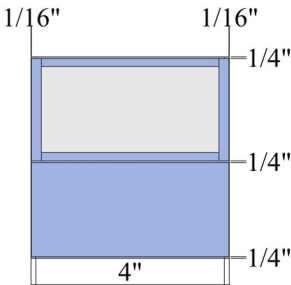
Base



Drawer



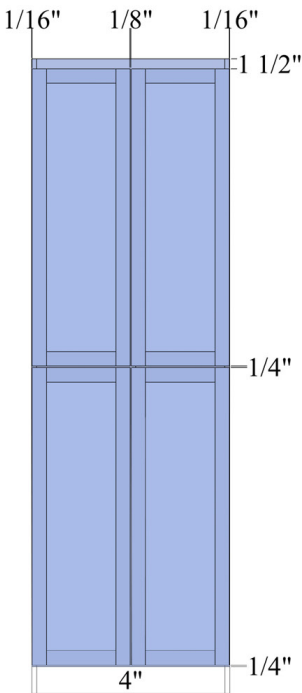
AB



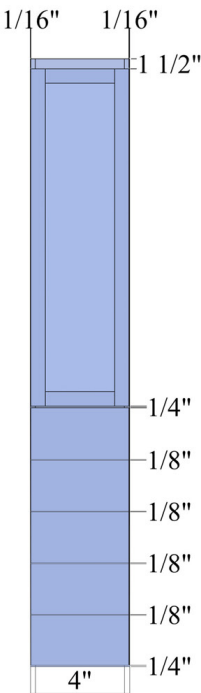
DD



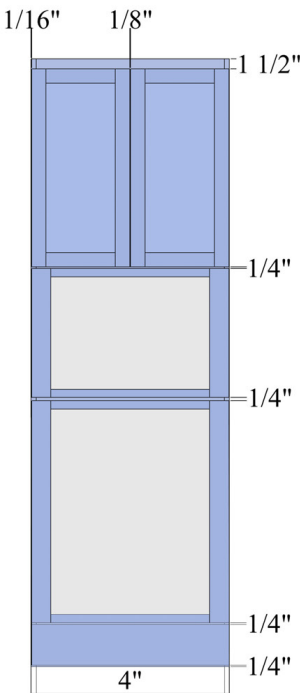
Utility



LCD



OC



Cabinet Options

Cabinet Interior

- White
- Maple Print
- Finished

Hinges

- 120°
- 105° Soft Close
- 165°

Drawers

- Standard 3/4 Ext
- Standard Undermount FESC
- Standard FESC
- Dovetail Undermount FESC

FESC = Full Extend Soft Close

***For a list of our current color and finish options see our most current Style Guide.**

Due to natural grain and color variations in wood, many changing environmental factors, and different processes of finish application, colors vary from piece to piece and even on the same piece. Different species, finish products and applications all have their unique characteristics which affect the outcome of the finish. These factors combined give each project its own unique look and beauty. (Note: All wood finishes change to some extent over time because of air, moisture and other factors.)

Care and Cleaning

After cabinets are installed, wipe down all exteriors and interiors with a damp cloth to remove dust, drying immediately with a dry cloth. Be careful not to scratch the surface when wiping off dust and debris.

Regular exterior and interior cleaning require only wiping with a damp cloth then immediately drying. Remove oil, grease or general soil using a clean cloth dampened with a fresh solution of mild soap and water. Rinse with a clean damp cloth, then dry thoroughly. It is important to wipe spills immediately. Prolonged exposure to spills, including food, water or other liquids can cause permanent discoloration or damage to your cabinets.

Avoid using harsh detergents, strong soap, abrasive cleaners or self-polishing waxes. All of these can damage the factory-applied protective finish.

Avoid using your used dishcloth to clean or dry cabinet exteriors. It may contain remnants of detergents and grease.

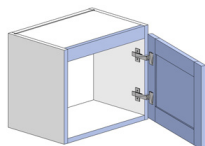
Treat your cabinets as you would fine furniture and they will reward you with long-lasting beauty. Excess moisture is an enemy of any finish. Sink, range, dishwasher, oven and baseboard areas are most susceptible. Immediately dry surfaces where water may have spilled using a clean cloth. Never hang damp towels over cabinetry to dry. Excessive moisture will cause the wood to expand and damage the finish.

If your kitchen includes doors with glass inserts, spray an ammonia-free glass cleaner on a clean, soft lint-free cloth or paper towel. Avoid spraying cleaner directly on glass as overspray may cause damage to the wood finish.

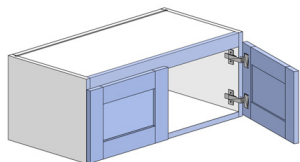
Standard wall cabinets are 12" deep
Specify hinge L or R on single door cabinets

Wall Cabinet

12", 15" high, no shelf



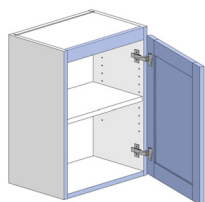
W0912	W0915
W1212	W1215
W1512	W1515
W1812	W1815
W2112	W2115
W2412	W2415



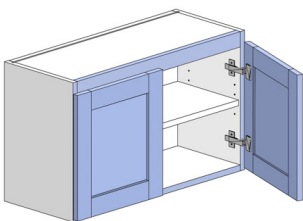
W2412-2	W2415-2
W2712	W2715
W3012	W3015
W3312	W3315
W3612	W3615
W3912	W3915
W4212	W4215
W4512	W4515
W4812	W4815

Wall Cabinet

18", 21", 24" high, 1 adjustable shelf



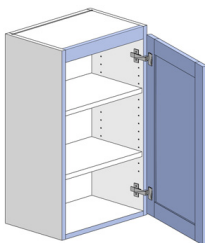
W0918	W0921	W0924
W1218	W1221	W1224
W1518	W1521	W1524
W1818	W1821	W1824
W2118	W2121	W2124
W2418	W2421	W2424



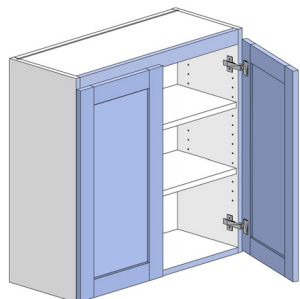
W2418-2	W2421-2	W2424-2
W2718	W2721	W2724
W3018	W3021	W3024
W3318	W3321	W3324
W3618	W3621	W3624
W3918	W3921	W3924
W4218	W4221	W4224
W4518	W4521	W4524
W4818	W4821	W4824

Wall Cabinet

27", 30", 33", 36" high, 2 adjustable shelves



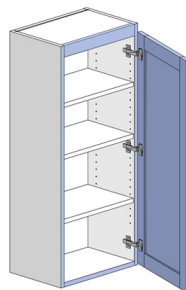
W0927	W0930
W1227	W1230
W1527	W1530
W1827	W1830
W2127	W2130
W2427	W2430
W0933	W0936
W1233	W1236
W1533	W1536
W1833	W1836
W2133	W2136
W2433	W2436



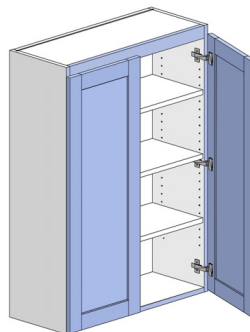
W2427-2	W2430-2
W2727	W2730
W3027	W3030
W3327	W3330
W3627	W3630
W3927	W3930
W4227	W4230
W4527	W4530
W4827	W4830
W2433-2	W2436-2
W2733	W2736
W3033	W3036
W3333	W3336
W3633	W3636
W3933	W3936
W4233	W4236
W4533	W4536
W4833	W4836

Wall Cabinet

39", 42", 45" high, 3 adjustable shelves



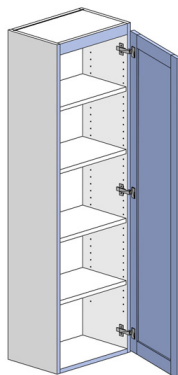
W0939	W0942	W0945
W1239	W1242	W1245
W1539	W1542	W1545
W1839	W1842	W1845
W2139	W2142	W2145
W2439	W2442	W2445



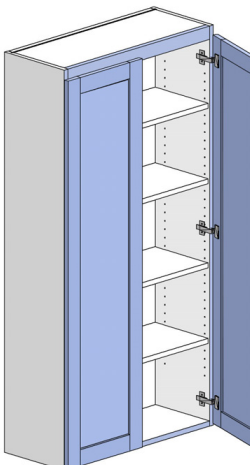
W2439-2	W2442-2	W2445-2
W2739	W2742	W2745
W3039	W3042	W3045
W3339	W3342	W3345
W3639	W3642	W3645
W3939	W3942	W3945
W4239	W4242	W4245
W4539	W4542	W4545
W4839	W4842	W4845

Wall Cabinet

48", 54" high, 3 adjustable shelves
60" high, 4 adjustable shelves



W0948	W0954	W0960
W1248	W1254	W1260
W1548	W1554	W1560
W1848	W1854	W1860
W2148	W2154	W2160
W2448	W2454	W2460

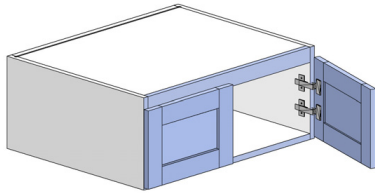


W2448-2	W2454-2	W2460-2
W2748	W2754	W2760
W3048	W3054	W3060
W3348	W3354	W3360
W3648	W3654	W3660
W3948	W3954	W3960
W4248	W4254	W4260
W4548	W4554	W4560
W4848	W4854	W4860

Standard wall cabinets are 12" deep
Specify hinge L or R on single door cabinets

24" Deep Wall Cabinet

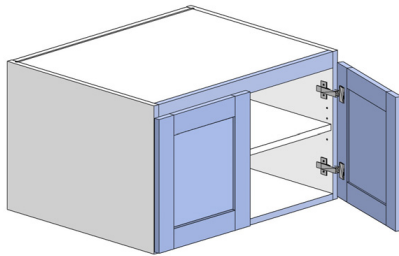
12", 15" high, no shelf



W3012*24	W3015*24
W3312*24	W3315*24
W3612*24	W3615*24
W3912*24	W3915*24
W4212*24	W4215*24
W4512*24	W4515*24
W4812*24	W4815*24

24" Deep Wall Cabinet

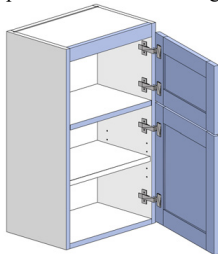
18", 21", 24", 27" high, 1 adjustable shelf on each side



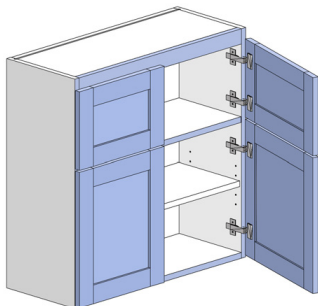
W3018*24	W3021*24
W3318*24	W3321*24
W3618*24	W3621*24
W3918*24	W3921*24
W4218*24	W4221*24
W4518*24	W4521*24
W4818*24	W4821*24
W3024*24	W3027*24
W3324*24	W3327*24
W3624*24	W3627*24
W3924*24	W3927*24
W4224*24	W4227*24
W4524*24	W4527*24
W4824*24	W4827*24

Wall Stacked Cabinet

18", 21", 24" high, 1 adjustable shelf
Top door matches a 12" high wall cabinet



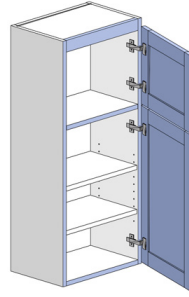
WS0930	WS0933	WS0936
WS1230	WS1233	WS1236
WS1530	WS1533	WS1536
WS1830	WS1833	WS1836
WS2130	WS2133	WS2136
WS2430	WS2433	WS2436



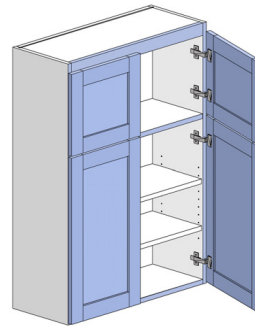
WS2430-2	WS2433-2	WS2436-2
WS2730	WS2733	WS2736
WS3030	WS3033	WS3036
WS3330	WS3333	WS3336
WS3630	WS3633	WS3636
WS3930	WS3933	WS3936
WS4230	WS4233	WS4236
WS4530	WS4533	WS4536
WS4830	WS4833	WS4836

Wall Stacked Cabinet

39", 42", 45" high, 2 adjustable shelves
Top door matches a 15" high wall cabinet



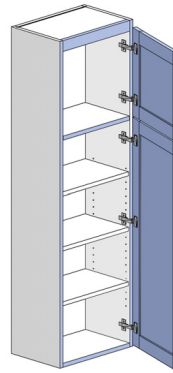
WS0939	WS0942	WS0945
WS1239	WS1242	WS1245
WS1539	WS1542	WS1545
WS1839	WS1842	WS1845
WS2139	WS2142	WS2145
WS2439	WS2442	WS2445



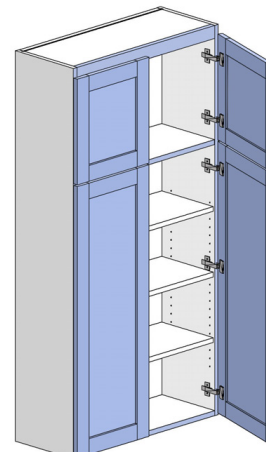
WS2439-2	WS2442-2	WS2445-2
WS2739	WS2742	WS2745
WS3039	WS3042	WS3045
WS3339	WS3342	WS3345
WS3639	WS3642	WS3645
WS3939	WS3942	WS3945
WS4239	WS4242	WS4245
WS4539	WS4542	WS4545
WS4839	WS4842	WS4845

Wall Stacked Cabinet

48", 54" high, 3 adjustable shelves
60" high, 4 adjustable shelves
Top door matches an 18" high wall cabinet



WS0948	WS0954	WS0960
WS1248	WS1254	WS1260
WS1548	WS1554	WS1560
WS1848	WS1854	WS1860
WS2148	WS2154	WS2160
WS2448	WS2454	WS2460



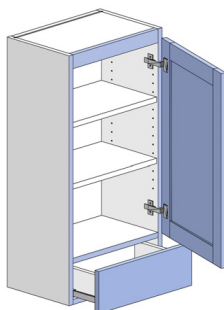
WS2448-2	WS2454-2	WS2460-2
WS2748	WS2754	WS2760
WS3048	WS3054	WS3060
WS3348	WS3354	WS3360
WS3648	WS3654	WS3660
WS3948	WS3954	WS3960
WS4248	WS4254	WS4260
WS4548	WS4554	WS4560
WS4848	WS4854	WS4860

Standard wall cabinets are 12" deep
Specify hinge L or R on single door cabinets

Wall 1 Drawer Cabinet

30" high, 1 shelf
33" – 42" high, 2 shelves
45" – 60" high, 3 shelves

-Only Side Mount-Full Extend NON-SOFT
CLOSE drawer glides available on standard depth

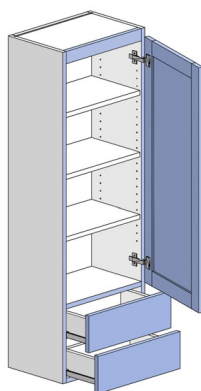


WDC0930-1	WDC0933-1	WDC0936-1
WDC1230-1	WDC1233-1	WDC1236-1
WDC1530-1	WDC1533-1	WDC1536-1
WDC1830-1	WDC1833-1	WDC1836-1
WDC2130-1	WDC2133-1	WDC2136-1
WDC2430-1	WDC2433-1	WDC2436-1
WDC0939-1	WDC0942-1	WDC0945-1
WDC1239-1	WDC1242-1	WDC1245-1
WDC1539-1	WDC1542-1	WDC1545-1
WDC1839-1	WDC1842-1	WDC1845-1
WDC2139-1	WDC2142-1	WDC2145-1
WDC2439-1	WDC2442-1	WDC2445-1
WDC0948-1	WDC0954-1	WDC0960-1
WDC1248-1	WDC1254-1	WDC1260-1
WDC1548-1	WDC1554-1	WDC1560-1
WDC1848-1	WDC1854-1	WDC1860-1
WDC2148-1	WDC2154-1	WDC2160-1
WDC2448-1	WDC2454-1	WDC2460-1

Wall 2 Drawer Cabinet

30" – 36" high, 1 shelf
39" – 48" high, 2 shelves
54" – 60" high, 3 shelves

-Only Side Mount-Full Extend NON-SOFT
CLOSE drawer glides available on standard depth

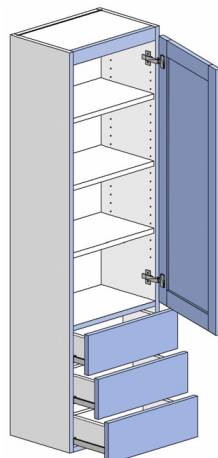


WDC0930-2	WDC0933-2	WDC0936-2
WDC1230-2	WDC1233-2	WDC1236-2
WDC1530-2	WDC1533-2	WDC1536-2
WDC1830-2	WDC1833-2	WDC1836-2
WDC2130-2	WDC2133-2	WDC2136-2
WDC2430-2	WDC2433-2	WDC2436-2
WDC0939-2	WDC0942-2	WDC0945-2
WDC1239-2	WDC1242-2	WDC1245-2
WDC1539-2	WDC1542-2	WDC1545-2
WDC1839-2	WDC1842-2	WDC1845-2
WDC2139-2	WDC2142-2	WDC2145-2
WDC2439-2	WDC2442-2	WDC2445-2
WDC0948-2	WDC0954-2	WDC0960-2
WDC1248-2	WDC1254-2	WDC1260-2
WDC1548-2	WDC1554-2	WDC1560-2
WDC1848-2	WDC1854-2	WDC1860-2
WDC2148-2	WDC2154-2	WDC2160-2
WDC2448-2	WDC2454-2	WDC2460-2

Wall 3 Drawer Cabinet

30" – 33" high, no shelf
36" – 42" high, 1 shelf
45" – 54" high, 2 shelves
60" high, 3 shelves

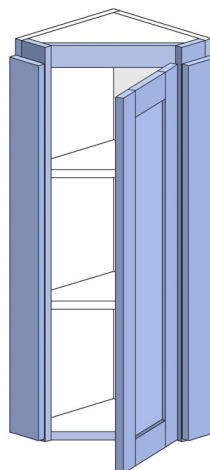
-Only Side Mount-Full Extend NON-SOFT
CLOSE drawer glides available on standard depth



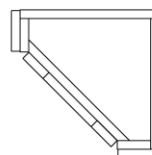
WDC0930-3	WDC0933-3	WDC0936-3
WDC1230-3	WDC1233-3	WDC1236-3
WDC1530-3	WDC1533-3	WDC1536-3
WDC1830-3	WDC1833-3	WDC1836-3
WDC2130-3	WDC2133-3	WDC2136-3
WDC2430-3	WDC2433-3	WDC2436-3
WDC0939-3	WDC0942-3	WDC0945-3
WDC1239-3	WDC1242-3	WDC1245-3
WDC1539-3	WDC1542-3	WDC1545-3
WDC1839-3	WDC1842-3	WDC1845-3
WDC2139-3	WDC2142-3	WDC2145-3
WDC2439-3	WDC2442-3	WDC2445-3
WDC0948-3	WDC0954-3	WDC0960-3
WDC1248-3	WDC1254-3	WDC1260-3
WDC1548-3	WDC1554-3	WDC1560-3
WDC1848-3	WDC1854-3	WDC1860-3
WDC2148-3	WDC2154-3	WDC2160-3
WDC2448-3	WDC2454-3	WDC2460-3

Wall Angle Cabinet

Shelf count is same as standard cabinet
Width and depth are the same
WAC24** is only available with 2 doors



Top View



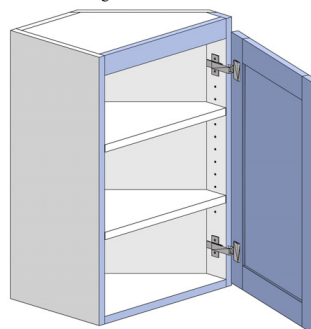
WAC1212	WAC1512	WAC1812
WAC1215	WAC1515	WAC1815
WAC1218	WAC1518	WAC1818
WAC1221	WAC1521	WAC1821
WAC1224	WAC1524	WAC1824
WAC1227	WAC1527	WAC1827
WAC1230	WAC1530	WAC1830
WAC1233	WAC1533	WAC1833
WAC1236	WAC1536	WAC1836
WAC1239	WAC1539	WAC1839
WAC1242	WAC1542	WAC1842
WAC1245	WAC1545	WAC1845
WAC1248	WAC1548	WAC1848
WAC1254	WAC1554	WAC1854
WAC1260	WAC1560	WAC1860

WAC2112	WAC2412
WAC2115	WAC2415
WAC2118	WAC2418
WAC2121	WAC2421
WAC2124	WAC2424
WAC2127	WAC2427
WAC2130	WAC2430
WAC2133	WAC2433
WAC2136	WAC2436
WAC2139	WAC2439
WAC2142	WAC2442
WAC2145	WAC2445
WAC2148	WAC2448
WAC2154	WAC2454
WAC2160	WAC2460

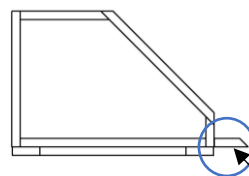
Wall Returned Angle

Shelf count is same as standard wall cabinet
45° Angle Clip 9" x 9"

Specify R or L
Right is shown



Top View



WRA1212	WRA1215	WRA1218
WRA1512	WRA1515	WRA1518
WRA1812	WRA1815	WRA1818
WRA2112	WRA2115	WRA2118
WRA2412	WRA2415	WRA2418

WRA1221	WRA1224	WRA1227
WRA1521	WRA1524	WRA1527
WRA1821	WRA1824	WRA1827
WRA2121	WRA2124	WRA2127
WRA2421	WRA2424	WRA2427

WRA1230	WRA1233	WRA1236
WRA1530	WRA1533	WRA1536
WRA1830	WRA1833	WRA1836
WRA2130	WRA2133	WRA2136
WRA2430	WRA2433	WRA2436

WRA1239	WRA1242	WRA1245
WRA1539	WRA1542	WRA1545
WRA1839	WRA1842	WRA1845
WRA2139	WRA2142	WRA2145
WRA2439	WRA2442	WRA2445

WRA1248
WRA1548
WRA1848
WRA2148
WRA2448

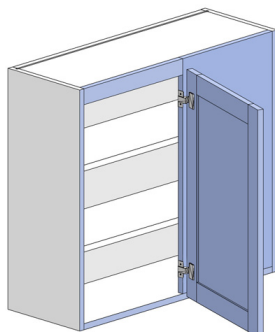
Requires a 4" filler
ordered separately

Standard wall cabinets are 12" deep
Specify hinge L or R on single door cabinets

Wall Square Corner Cabinet

Shelf count is same as standard wall cabinet
15" full blind panel

Specify R or L
Left is shown



WSC2412	WSC2415	WSC2418
WSC2712	WSC2715	WSC2718
WSC3012	WSC3015	WSC3018
WSC3312	WSC3315	WSC3318
WSC3612	WSC3615	WSC3618
WSC3912	WSC3915	WSC3918

WSC2421	WSC2424	WSC2427
WSC2721	WSC2724	WSC2727
WSC3021	WSC3024	WSC3027
WSC3321	WSC3324	WSC3327
WSC3621	WSC3624	WSC3627
WSC3921	WSC3924	WSC3927

WSC2430	WSC2433	WSC2436
WSC2730	WSC2733	WSC2736
WSC3030	WSC3033	WSC3036
WSC3330	WSC3333	WSC3336
WSC3630	WSC3633	WSC3636
WSC3930	WSC3933	WSC3936

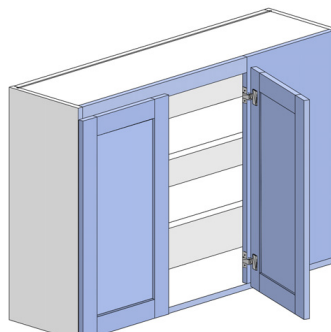
WSC2439	WSC2442	WSC2448
WSC2739	WSC2742	WSC2748
WSC3039	WSC3042	WSC3048
WSC3339	WSC3342	WSC3348
WSC3639	WSC3642	WSC3648
WSC3939	WSC3942	WSC3948

WSC2454	WSC2460
WSC2754	WSC2760
WSC3054	WSC3060
WSC3354	WSC3360
WSC3654	WSC3660
WSC3954	WSC3960

Wall Square Corner Cabinet

Shelf count is same as standard wall cabinet
15" full blind panel

Specify R or L
Left is shown



WSC4212	WSC4215	WSC4218
WSC4512	WSC4515	WSC4518
WSC4812	WSC4815	WSC4818

WSC4221	WSC4224	WSC4227
WSC4521	WSC4524	WSC4527
WSC4821	WSC4824	WSC4827

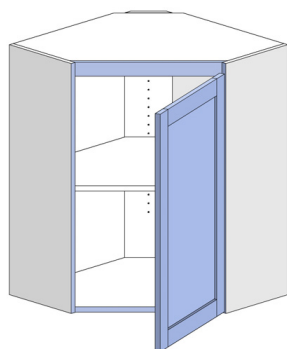
WSC4230	WSC4233	WSC4236
WSC4530	WSC4533	WSC4536
WSC4830	WSC4833	WSC4836

WSC4239	WSC4242	WSC4248
WSC4539	WSC4542	WSC4548
WSC4839	WSC4842	WSC4848

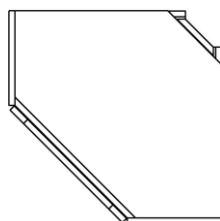
WSC4254	WSC4260
WSC4554	WSC4560
WSC4854	WSC4860

Wall Corner Cabinet

Shelf count is same as standard cabinet



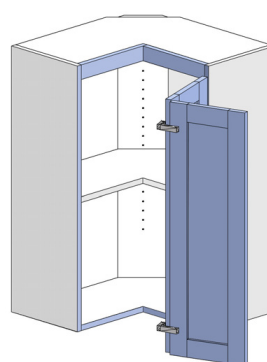
Top View



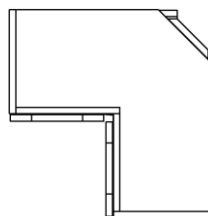
WC2124	WC2424	WC2724
WC2127	WC2427	WC2727
WC2130	WC2430	WC2730
WC2133	WC2433	WC2733
WC2136	WC2436	WC2736
WC2139	WC2439	WC2739
WC2142	WC2442	WC2742
WC2145	WC2445	WC2745
WC2148	WC2448	WC2748
WC2154	WC2454	WC2754
WC2160	WC2460	WC2760

Wall Corner Pie Cabinet

Shelf count is same as standard cabinet



Top View



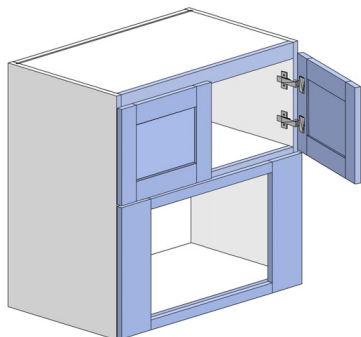
WCP2124	WCP2424	WCP2724
WCP2127	WCP2427	WCP2727
WCP2130	WCP2430	WCP2730
WCP2133	WCP2433	WCP2733
WCP2136	WCP2436	WCP2736
WCP2139	WCP2439	WCP2739
WCP2142	WCP2442	WCP2742
WCP2145	WCP2445	WCP2745
WCP2148	WCP2448	WCP2748
WCP2154	WCP2454	WCP2754
WCP2160	WCP2460	WCP2760

WCP2424*15	WCP2724*15
WCP2427*15	WCP2727*15
WCP2430*15	WCP2730*15
WCP2433*15	WCP2733*15
WCP2436*15	WCP2736*15
WCP2439*15	WCP2739*15
WCP2442*15	WCP2742*15
WCP2445*15	WCP2745*15
WCP2448*15	WCP2748*15
WCP2454*15	WCP2754*15
WCP2460*15	WCP2760*15

Standard wall cabinets are 12" deep
Specify hinge L or R on single door cabinets

Microwave Cabinet

18" deep
Cabinet interior is melamine



MO2730 MO2736
MO3030 MO3036
MO3330 MO3336
MO3630 MO3636

MO2739 MO2742
MO3039 MO3042
MO3339 MO3342
MO3639 MO3642

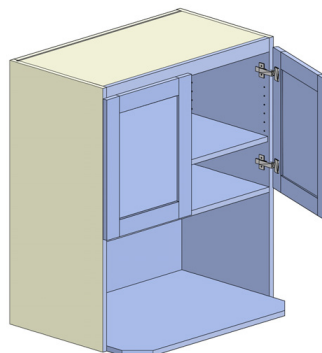
Shown with appliance frame

Specify cutout, if none is given cutout will be 16" tall and 1-1/2" less than the cabinet width

If cutout is over 1-1/2" smaller than the cabinet width an appliance frame will be added

Microwave Cabinet with Shelf

12" deep with 18" deep bottom
Finished interior



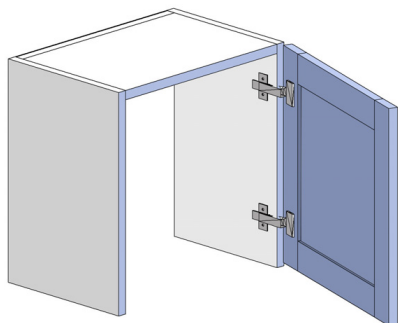
MOS2730 MOS2736
MOS3030 MOS3036
MOS3330 MOS3336
MOS3630 MOS3636

MOS2739 MOS2742
MOS3039 MOS3042
MOS3339 MOS3342
MOS3639 MOS3642

Specify cutout height, if none is given cutout will be 16" tall and 1-1/2" less than the cabinet

Square Appliance Center

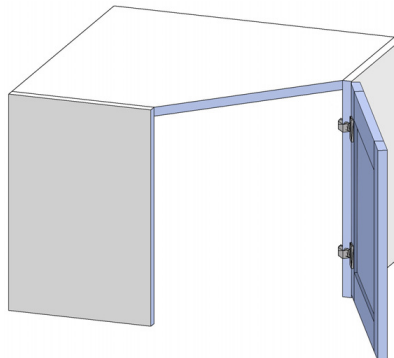
18-1/2" tall * 12" is standard
Must be assembled on site



SAPC18
SAPC21
SAPC24-2
SAPC27-2
SAPC30-2

Corner Appliance Center

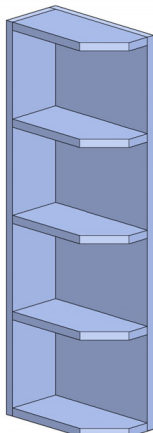
18-1/2" tall * 12" is standard
Must be assembled on site



APC21
APC21*15
APC24
APC24*15
APC27
APC27*15

Corner Shelf Cabinet

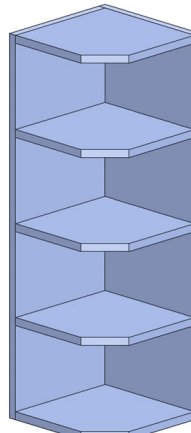
6" wide
Shelf count is same as standard cabinet
Finished Interior



CS24
CS27
CS30
CS33
CS36
CS39
CS24

Corner Shelf Cabinet

12" wide
Shelf count is same as standard cabinet
Finished Interior



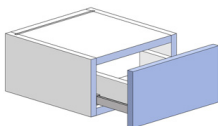
CS1224
CS1227
CS1230
CS1233
CS1236
CS1239
CS1242

Standard wall cabinets are 12" deep
Specify hinge L or R on single door cabinets

Wall Drawer Organizer

6" tall

-Only Side Mount-Full Extend NON-SOFT
CLOSE drawer glides available on standard depth

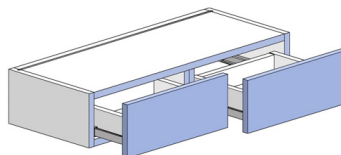


WDO09
WDO12
WDO15
WDO18
WDO21
WDO24
WDO27

Wall Drawer Organizer

6" tall

-Only Side Mount-Full Extend NON-SOFT
CLOSE drawer glides available on standard depth



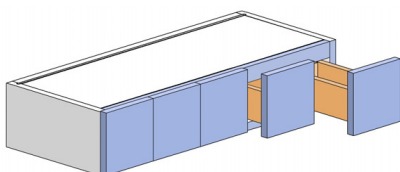
WDO30
WDO33
WDO36
WDO39
WDO42
WDO45
WDO48

Apothecary Cabinet

6" tall

5/8" Birch Ply drawer construction
No drawer glides

Can only be ordered in sizes listed:

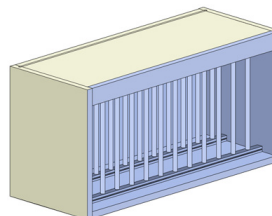


APO06
APO12
APO18
APO24
APO30
APO36
APO42
APO48

China Wall

Finished Interior

Not available in TFL

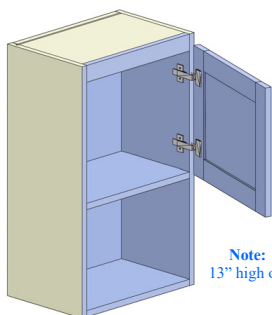


CW1515 CW2715
CW1815 CW3015
CW2115 CW3315
CW2415 CW3615

Wall Open Shelf Cabinet

Finished Interior

No shelf on 33" high, 1 shelf on 33" – 39" high, 2 shelves on 42" high



Note:
13" high open bottom

WOS0930 WOS0933 WOS0936
WOS1230 WOS1233 WOS1236
WOS1530 WOS1533 WOS1536
WOS1830 WOS1833 WOS1836
WOS2130 WOS2133 WOS2136
WOS2430 WOS2433 WOS2436

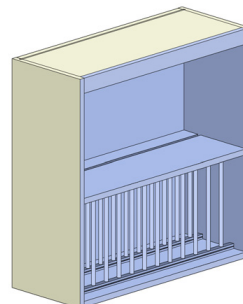
WOS0939 WOS0942
WOS1239 WOS1242
WOS1539 WOS1542
WOS1839 WOS1842
WOS2139 WOS2142
WOS2439 WOS2442

China Wall

Finished Interior

Not available in TFL

No shelf on 33" high, 1 shelf on 33" – 39" high, 2 shelves on 42" high

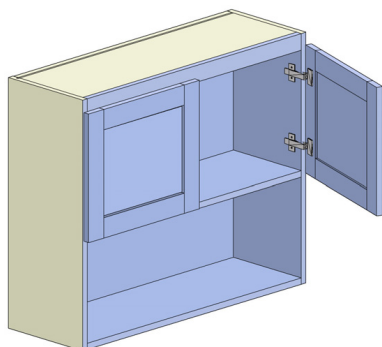


CW1530 CW1536 CW1542
CW1830 CW1836 CW1842
CW2130 CW2136 CW2142
CW2430 CW2436 CW2442
CW2730 CW2736 CW2742
CW3030 CW3036 CW3042
CW3330 CW3336 CW3342
CW3630 CW3636 CW3642

Wall Open Shelf Cabinet

Finished Interior

No shelf on 33" high, 1 shelf on 33" – 39" high, 2 shelves on 42" high



Note:
13" high open bottom

WOS2430-2 WOS2433-2
WOS2730 WOS2733
WOS3030 WOS3033
WOS3330 WOS3333
WOS3630 WOS3633
WOS3930 WOS3933
WOS4230 WOS4233
WOS4530 WOS4533
WOS4830 WOS4833

WOS2436-2 WOS2439-2
WOS2736 WOS2739
WOS3036 WOS3039
WOS3336 WOS3339
WOS3636 WOS3639
WOS3936 WOS3939
WOS4236 WOS4239
WOS4536 WOS4539
WOS4836 WOS4839

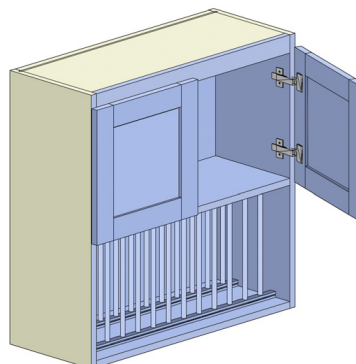
WOS2442-2
WOS2742
WOS3042
WOS3342
WOS3642
WOS3942
WOS4242
WOS4542
WOS4842

China Wall with Doors

Finished Interior

Not available in TFL

No shelf on 33" high, 1 shelf on 33" – 39" high, 2 shelves on 42" high

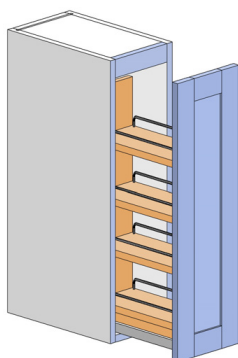


CWD2430-2 CWD2436-2
CWD2730 CWD2736
CWD3030 CWD3036
CWD3330 CWD3336
CWD3630 CWD3636

CWD2442-2
CWD2742
CWD3042
CWD3342
CWD3642

Standard wall cabinets are 12" deep
Specify hinge L or R on single door cabinets

Wall Pantry Pull Out



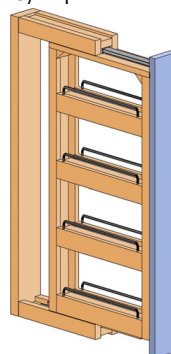
WPP0930 WPP0939
WPP1230 WPP1239

WPP0933 WPP0942
WPP1233 WPP1242

WPP0936
WPP1236

Wall Pantry Pull Out Filler

Requires a 3/4" panel or a cabinet on each side

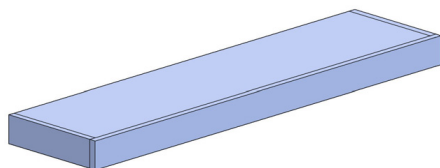


WPPF0330 WPPF0630
WPPF0333 WPPF0633
WPPF0336 WPPF0636
WPPF0339 WPPF0639
WPPF0342 WPPF0642

Floating Shelf

Finished face and both sides
3" tall

Standard return both sides unless specified NO RETURN R, L or B (both)

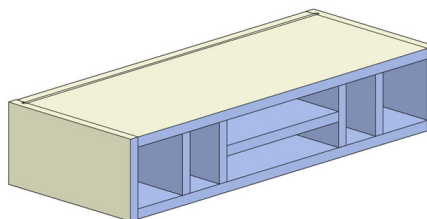


FS12 FS60
FS24 FS72
FS36 FS84
FS48 FS96

Loose Desk Organizer

6" tall

Finished interior

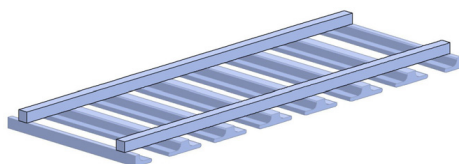


DORG24
DORG27
DORG30
DORG33
DORG36
DORG39
DORG42
DORG45
DORG48

Stemware Rack

Only available in 18", 30" and 36" wide
Check for available species

Not available in TFL

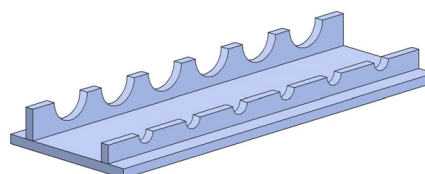


SR18
SR30
SR36

Wine Rack Scallop

Only available in 18", 24", 30" and 48" wide

Not available in TFL

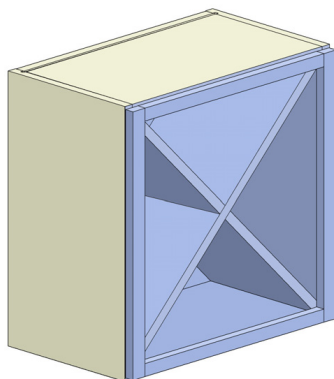


WRS18
WRS24
WRS30
WRS48

X Wine Rack

*Can only be ordered in sizes listed
Only available with no fir down
Finished interior

Not available in TFL



*Can only be ordered
in the sizes listed:

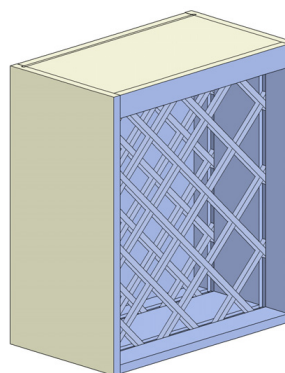
WRX18*18
WRX21*21
WRX24*24

Plan your design for
No Fir Down

Wine Rack

18", 21", 24", 27", 30", 33" and 36" high
Finished interior

Not available in TFL



WR1818 WR1821 WR1824
WR2118 WR2121 WR2124
WR2418 WR2421 WR2424
WR2718 WR2721 WR2724
WR3018 WR3021 WR3024
WR3318 WR3321 WR3324
WR3618 WR3621 WR3624

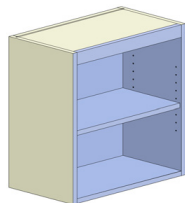
WR1827 WR1830
WR2127 WR2130
WR2427 WR2430

WR1833 WR1836
WR2133 WR2136
WR2433 WR2436

Standard wall cabinets are 12" deep
Specify hinge L or R on single door cabinets

Wall Book Case

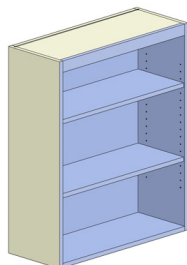
21", 24" tall, up to 24" deep
Finished interior with 1 adjustable shelf



WBK0921	WBK0924
WBK1221	WBK1224
WBK1521	WBK1524
WBK1821	WBK1824
WBK2121	WBK2124
WBK2421	WBK2424
WBK2721	WBK2724
WBK3021	WBK3024
WBK3321	WBK3324
WBK3621	WBK3624

Wall Book Case

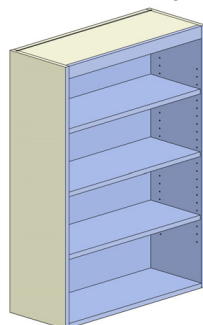
30", 36" tall, up to 24" deep
Finished interior with 2 adjustable shelves



WBK0930	WBK0936
WBK1230	WBK1236
WBK1530	WBK1536
WBK1830	WBK1836
WBK2130	WBK2136
WBK2430	WBK2436
WBK2730	WBK2736
WBK3030	WBK3036
WBK3330	WBK3336
WBK3630	WBK3636

Wall Book Case

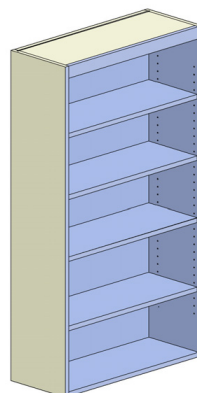
42", 48" tall, up to 24" deep
Finished interior with 3 adjustable shelves



WBK0942	WBK0948
WBK1242	WBK1248
WBK1542	WBK1548
WBK1842	WBK1848
WBK2142	WBK2148
WBK2442	WBK2448
WBK2742	WBK2748
WBK3042	WBK3048
WBK3342	WBK3348
WBK3642	WBK3648

Wall Book Case

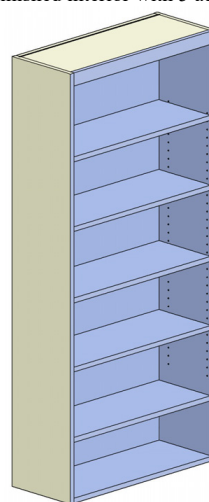
54", 60" tall, up to 24" deep
Finished interior with 4 adjustable shelves



WBK0954	WBK0960
WBK1254	WBK1260
WBK1554	WBK1560
WBK1854	WBK1860
WBK2154	WBK2160
WBK2454	WBK2460
WBK2754	WBK2760
WBK3054	WBK3060
WBK3354	WBK3360
WBK3654	WBK3660

Wall Book Case

66", 72" tall, up to 24" deep
Finished interior with 5 adjustable shelves

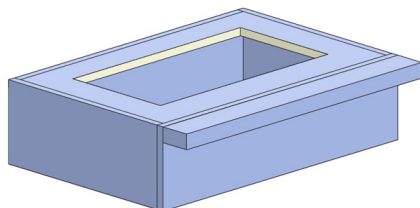


WBK0966	WBK0972
WBK1266	WBK1272
WBK1566	WBK1572
WBK1866	WBK1872
WBK2166	WBK2172
WBK2466	WBK2472
WBK2766	WBK2772
WBK3066	WBK3072
WBK3366	WBK3372
WBK3666	WBK3672

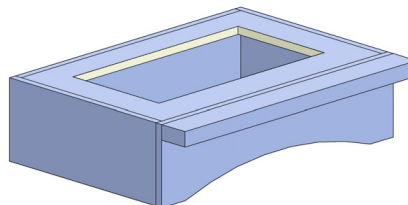
Range Hood Shelf Styles

8" tall, 19-3/4" deep
Specify cutout size for blower

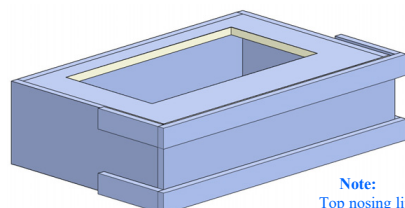
Only RHSD available in TFL



RHSA30
RHSA36
RHSA42
RHSA48

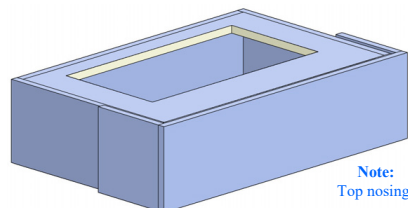


RHSD30
RHSD36
RHSD42
RHSD48



RHSJ30
RHSJ36
RHSJ42
RHSJ48

Note:
Top nosing lip is 1/4"



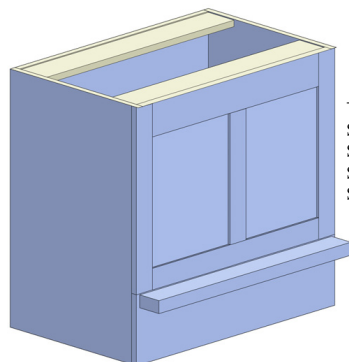
Note:
Top nosing lip is 1/4"

Standard wall cabinets are 12" deep
Specify hinge L or R on single door cabinets

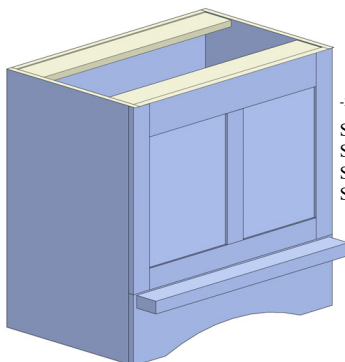
Square Range Hood Styles

19-3/4" deep, 30" high
Insert shelf is installed 4-1/4" up from bottom
Specify cutout size for blower

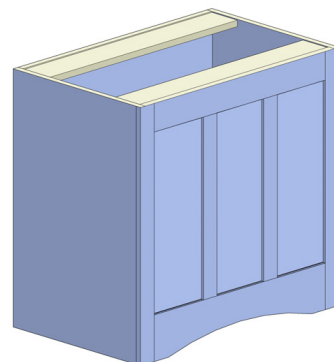
Only SRHH and SRHK available in TFL



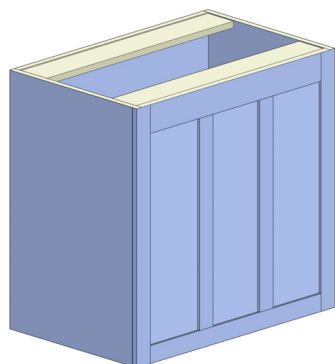
-2 Panels-
SRHA30
SRHA36
SRHA42
SRHA48



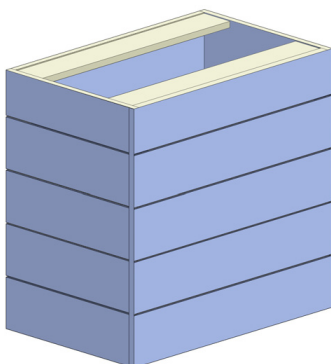
-2 Panels-
SRHD30
SRHD36
SRHD42
SRHD48



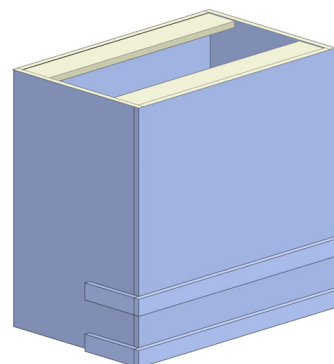
-2 Panels-
SRHG30
-3 Panels-
SRHG36
SRHG42
SRHG48



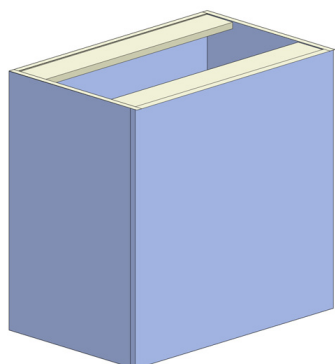
-2 Panels-
SRHH30
-3 Panels-
SRHH36
SRHH42
SRHH48



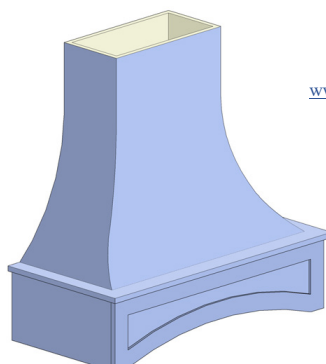
SRHI30
SRHI36
SRHI42
SRHI48



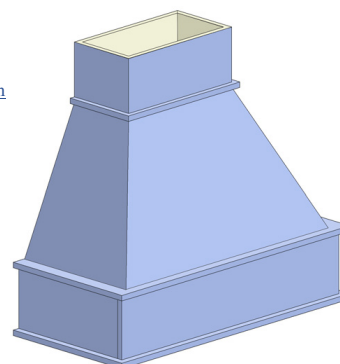
SRHJ30
SRHJ36
SRHJ42
SRHJ48



SRHK30
SRHK36
SRHK42
SRHK48



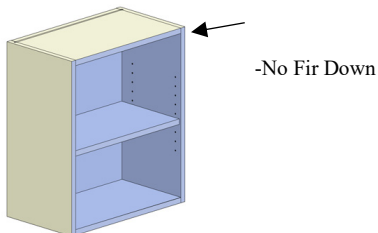
Please visit
www.wood-hood.com
for alternative
range hood
options
-Examples-



Standard wall cabinets are 12" deep
Specify hinge L or R on single door cabinets

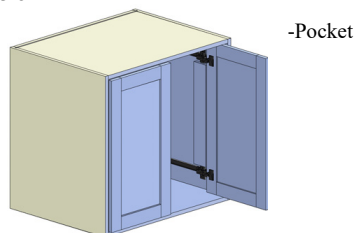
No Fir Down

Upper cabinets may be ordered with no fir down. This is used on the bottom cabinet when cabinets are stacked or when no crown molding is needed



Pocket Doors

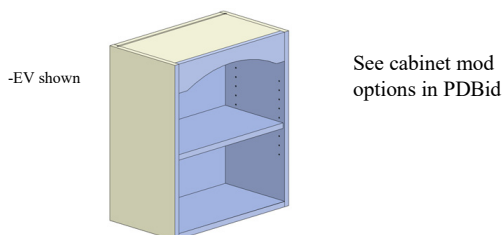
Cabinet height from 18" to 42" tall, minimum depth is 15" and the door overlay is 3/8"



Add Valance Top

Order with specified valance

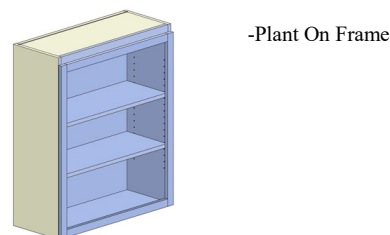
Not available in TFL



Plant On Bookcase Frame

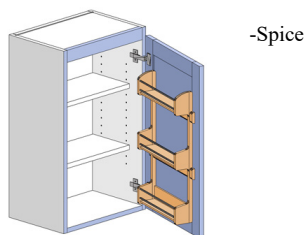
Plant on frame to make bookcase flush with doors/fronts

Not available in TFL



Spice Rack on Back of Door

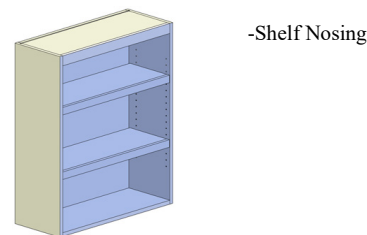
Adjustable shelves are 5-1/4" less than the depth of the cabinet



Shelf Nosing

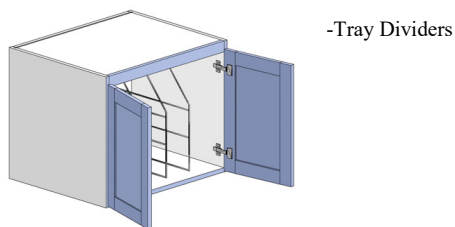
1-1/2" tall nosing on finished interior shelves

Not available in TFL



Tray Dividers

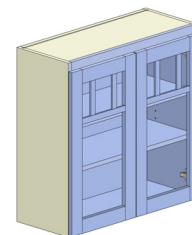
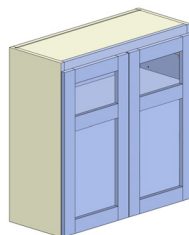
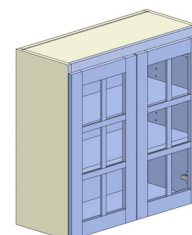
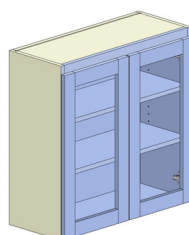
6 TD in 30" and 36" wide



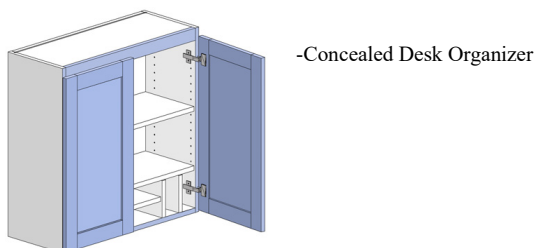
Cut For Glass Doors

CFG slats only available with square inside frame edge detail

Only FULL and TOP1/3 available in TFL



Concealed Desk Organizer

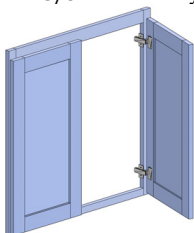


Standard wall cabinets are 12" deep
Specify hinge L or R on single door cabinets

Face Frame and Door

Standard frame stiles and rails are
1-1/2" with 1-3/8" door overlay

Not available in TFL



-FFD

Finished Interior of Cabinet

Cabinet interior to match exterior

-FINISHED INTERIOR

Cabinet Size Modifications

Reduce cabinet depth or height
Increase depth on a wall or bookcase up to 24"

No Reveal Bottom

No reveal bottom to maintain the reveal when stacking cabinets

-NO REVEAL BOTTOM

No Door on a Cabinet

Cabinet may be ordered without doors

-NO UPPER DOOR

No Bottom

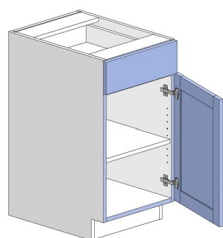
Order cabinet with no bottom to place on countertop

-NO BOTTOM

Standard base cabinets are 34-1/2" tall and 24" deep
Specify hinge L or R on single door cabinets

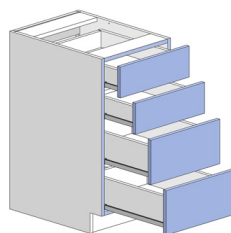
Base Cabinet

One Adjustable Shelf



B09
B12
B15
B18
B21
B24

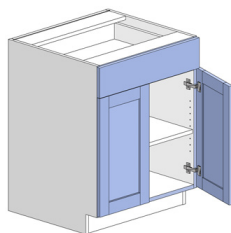
Four Drawer Cabinet



D09-4 D24-4
D12-4 D27-4
D15-4 D30-4
D18-4 D33-4
D21-4 D36-4

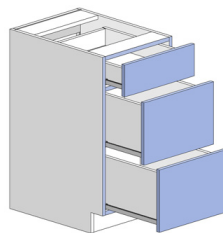
Base Cabinet

One Adjustable Shelf



B24-2
B27

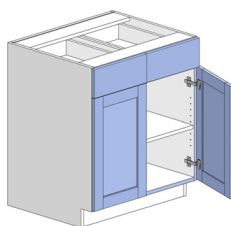
Three Drawer Cabinet



D09-3 D24-3
D12-3 D27-3
D15-3 D30-3
D18-3 D33-3
D21-3 D36-3

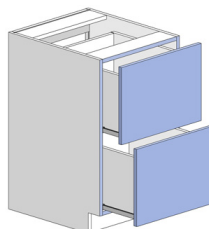
Base Cabinet

One Adjustable Shelf



B30
B33
B36
B39
B42
B45
B48

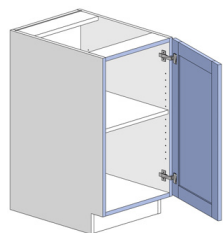
Two Drawer Cabinet



D09-2E D24-2E
D12-2E D27-2E
D15-2E D30-2E
D18-2E D33-2E
D21-2E D36-2E

Base Full Height Door Cabinet

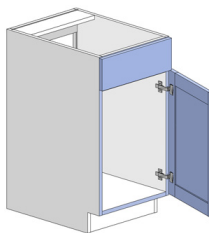
One Adjustable Shelf



B09-FHD
B12-FHD
B15-FHD
B18-FHD
B21-FHD
B24-FHD

Base Sink Cabinet

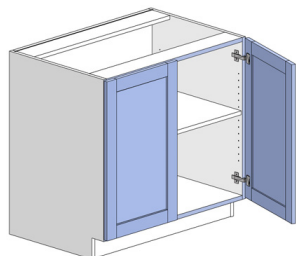
No adjustable shelf



BS18
BS21
BS24

Base Full Height Door Cabinet

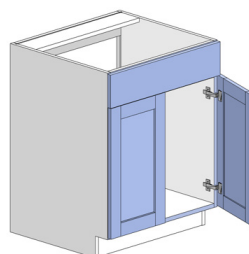
One Adjustable Shelf



B24-FHD-2
B27-FHD
B30-FHD
B33-FHD
B36-FHD
B39-FHD
B42-FHD
B45-FHD
B48-FHD

Base Sink Cabinet

No adjustable shelf

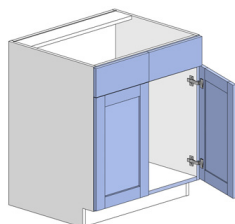


BS24-2
BS27

Standard base cabinets are 34-1/2" tall and 24" deep
Specify hinge L or R on single door cabinets

Base Sink Cabinet

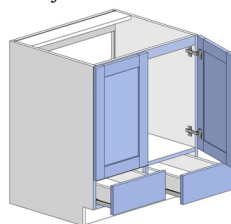
One Adjustable Shelf



BS30
BS33
BS36
BS39
BS42
BS45
BS48

Base Sink Inverted Cabinet

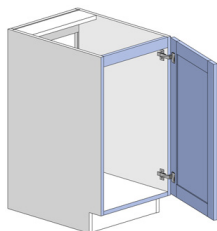
No adjustable shelf, no back
One Adjustable Shelf



BSI30
BSI33
BSI36
BSI39
BSI42
BSI45
BSI48

Base Sink Full Height Door Cabinet

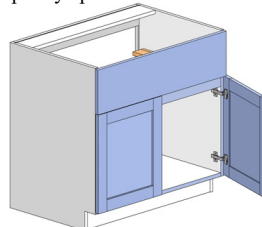
No adjustable shelf, no back



BS18-FHD
BS21-FHD
BS24-FHD

Base Sink Apron Cabinet

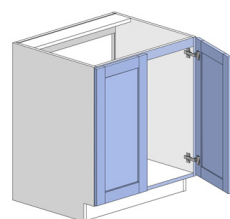
No adjustable shelf, no back
Front is sent loose to allow scribing (to fit sink)
Specify apron sink cutout size



BSA30
BSA33
BSA36
BSA39
BSA42
BSA45
BSA48

Base Sink Full Height Door Cabinet

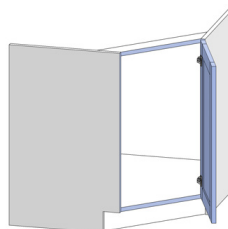
No adjustable shelf, no back



BS24-2-FHD
BS27-FHD
BS30-FHD
BS33-FHD
BS36-FHD
BS39-FHD
BS42-FHD
BS45-FHD
BS48-FHD

Sink Front Diagonal Cabinet

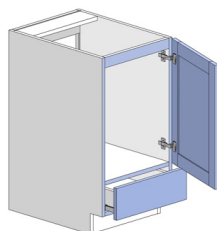
Must be assembled on site



SFD36
SFD39
SFD42
SFD45-2
SFD48-2

Base Sink Inverted Cabinet

No adjustable shelf, no back



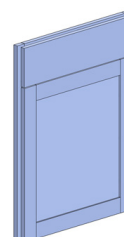
BSI18
BSI21
BSI24

Base Sink Font

This item consists of a frame, doors and fronts only
1-3/8" overlay

Not available in TFL

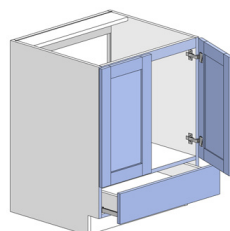
-BSF24-2 and wider will have 2 doors



BSF12
BSF15
BSF18
BSF21
BSF24
BSF24-2
BSF27
BSF30
BSF33
BSF36
BSF39
BSF42
BSF45
BSF48

Base Sink Inverted Cabinet

No adjustable shelf, no back



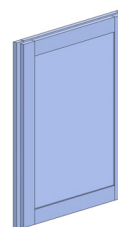
BSI24-2
BSI27

Base Sink Front Full Height Door

This item consists of a frame and doors only
1-3/8" overlay

Not available in TFL

-BSF24-2FHD and wider will have 2 doors

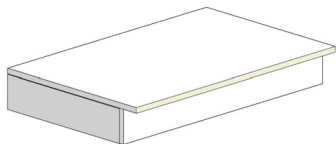


BSF12-FHD
BSF15-FHD
BSF18-FHD
BSF21-FHD
BSF24-FHD
BSF24-2-FHD
BSF27-FHD
BSF30-FHD
BSF33-FHD
BSF36-FHD
BSF39-FHD
BSF42-FHD
BSF45-FHD
BSF48-FHD

Standard base cabinets are 34-1/2" tall and 24" deep
Specify hinge L or R on single door cabinets

Sink Front Floor

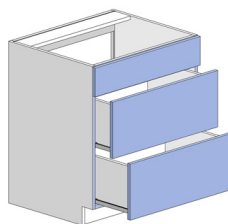
This item consists of a floor and a toe kick
Made 23-1/4" deep to sit behind a 3/4" frame



SFF24
SFF36
SFF48

Drawer Top Burner Cabinet

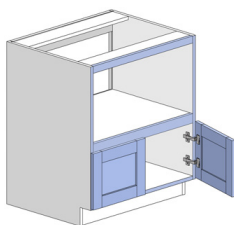
False top front



DTB30-3
DTB33-3
DTB36-3

Appliance Base Cabinet

No back in appliance area

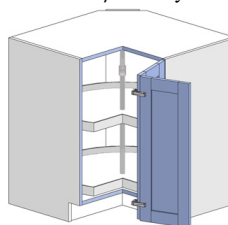


AB24
AB27
AB30
AB33
AB36

Specify cutout
If cutout is over 1-1/2" smaller than
the cabinet width an appliance frame
will be added

Lazy Susan Cabinet

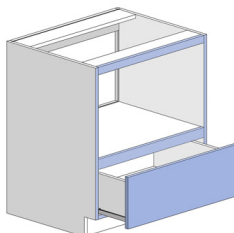
LS36 is held 4-1/2" away from the wall
LS33 is held 1-1/2" away from the wall



LS33
LS36

Appliance Base Drawer Cabinet

No back in appliance area

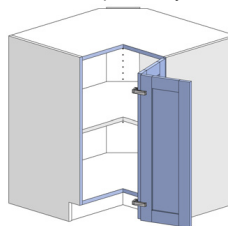


ABD24
ABD27
ABD30
ABD33
ABD36

Specify cutout
If cutout is over 1-1/2" smaller than
the cabinet width an appliance frame
will be added

Lazy Susan Cabinet

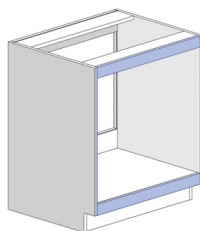
LS36 is held 4-1/2" away from the wall
LS33 is held 1-1/2" away from the wall



LS33-S
LS36-S

Appliance Base Open Cabinet

No back in appliance area

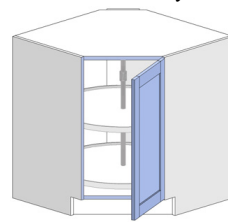


ABO24
ABO27
ABO30
ABO33
ABO36

Specify cutout
If cutout is over 1-1/2" smaller than
the cabinet width an appliance frame
will be added

Lazy Susan Diagonal Cabinet

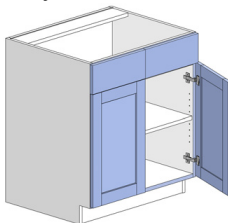
LSD36 is held 4-1/2" away from the wall
LSD33 is held 1-1/2" away from the wall



LSD33
LSD36

Base Top Burner Cabinet

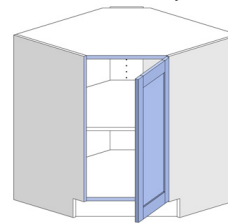
False fronts top
One Adjustable Shelf



BTB30
BTB33
BTB36
BTB39
BTB42
BTB45
BTB48

Lazy Susan Diagonal Cabinet

LSD36 is held 4-1/2" away from the wall
LSD33 is held 1-1/2" away from the wall



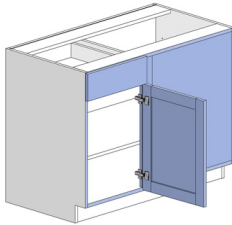
LSD33-S
LSD36-S

Standard base cabinets are 34-1/2" tall and 24" deep
Specify hinge L or R on single door cabinets

Base Square Corner Cabinet

27" Full blind panel, One adjustable shelf
Specify R or L

-Left
shown

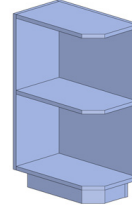


BSC36
BSC39
BSC42
BSC45
BSC48

Base Corner Shelf Cabinet

One fixed shelf
12" wide and 21" or 24" deep cabinet
Finished color of job

-Left
shown

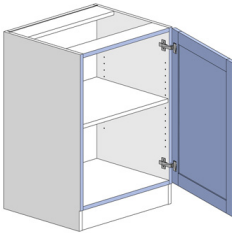


BCS21
BCS24

Shallow Base Cabinet

20" deep with one adjustable shelf
1/4" recessed toe kick

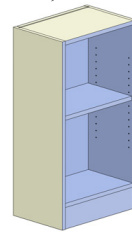
Toe must be ordered finished, non-recessed when job is TFL



SB21
SB24

Base Bookcase Cabinet

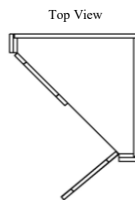
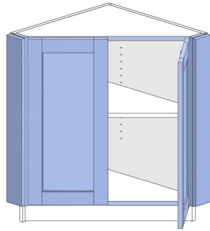
12" deep with one adjustable shelf
Toe is finished, non-recessed



BBK09
BBK12
BBK15
BBK18
BBK21
BBK24
BBK27
BBK30
BBK33
BBK36

Base Angle Corner Cabinet

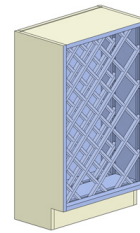
One adjustable shelf
Cabinet width and depth are the same



BAC12*12
BAC15*15
BAC18*18
BAC21*21
BAC24*24-2

Base Wine Rack Cabinet

12" deep cabinet

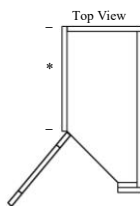
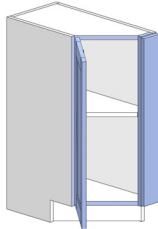


BWR15
BWR18
BWR21
BWR24

Base Angle Cabinet

24" deep
One Adjustable Shelf

-Left
shown



BA09 * = 18-5/8"
BA12 * = 15-5/8"
BA15 * = 12-5/8"
BA18 * = 9-5/8"
BA21 * = 6-5/8"

Base Wine Cube Cabinet

12" deep cabinet

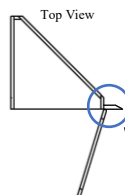
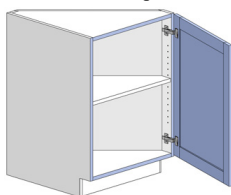


BWC06

Base Returned Angle Cabinet

One Adjustable Shelf
Cabinet width and depth are the same

-Right
shown

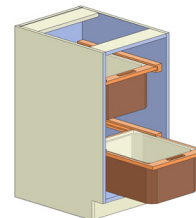


BRA12*12
BRA15*15
BRA18*18
BRA21*21
BRA24*24

Requires a 4" filler
ordered separately

Base Wicker Basket Cabinet

Finished interior cabinet with 2 wicker baskets
Only available in 15" and 18" wide

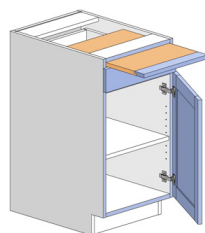


BWB15
BWB18

Standard base cabinets are 34-1/2" tall and 24" deep
Specify hinge L or R on single door cabinets

Base Bread Board Cabinet

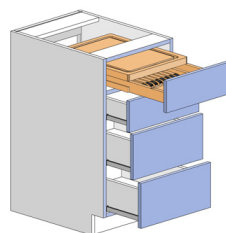
Not available in TFL



B12BB
B15BB
B18BB
B21BB
B24BB

4 Drawer Chopping Block Cabinet

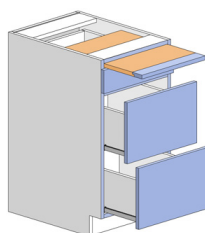
Only available in listed size



D18CBU-4

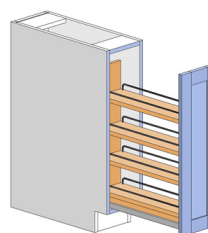
3 Drawer Bread Board Cabinet

Not available in TFL



D12BB-3
D15BB-3
D18BB-3
D21BB-3
D24BB-3

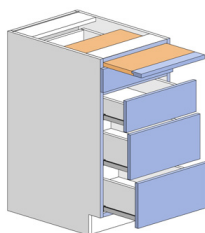
Base Pantry Pull Out Cabinet



BPP09
BPP12

4 Drawer Bread Board Cabinet

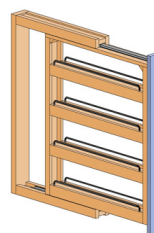
Not available in TFL



D12BB-4
D15BB-4
D18BB-4
D21BB-4
D24BB-4

Base Pantry Pull Out Filler

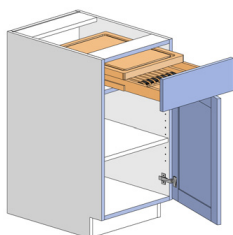
Requires a 3/4" panel or a cabinet on each side



BPPF03
BPPF06

Base Chopping Block Cabinet

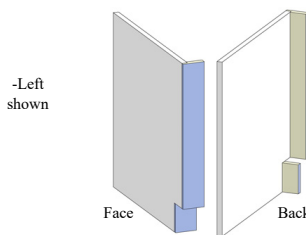
Only available in listed size



B18CBU

Dishwasher End

Specify L or R

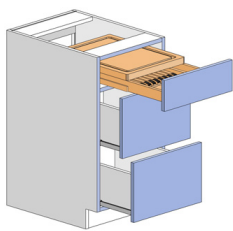


DE2435*1.5
DE2435*3
DE2435*6

DE2496*1.5
DE2496*3

3 Drawer Chopping Block Cabinet

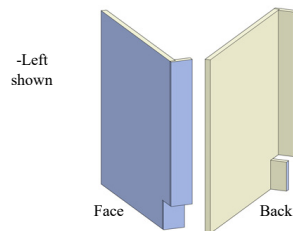
Only available in listed size



D18CBU-3

Finished Dishwasher End

Specify L or R



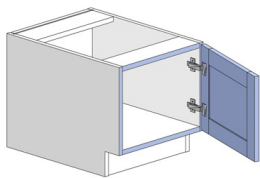
FDE2435*1.5
FDE2435*3
FDE2435*6

FDE2496*1.5
FDE2496*3

Standard base cabinets are 34-1/2" tall and 24" deep
Specify hinge L or R on single door cabinets

Base Bench Cabinet

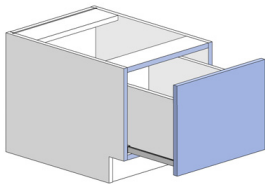
18" tall



BB09
BB12
BB15
BB18
BB21
BB24

1 Drawer Bench Cabinet

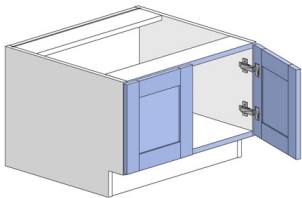
18" tall



BD09-1 BD24-1
BD12-1 BD27-1
BD15-1 BD30-1
BD18-1 BD33-1
BD21-1 BD36-1

Base Bench Cabinet

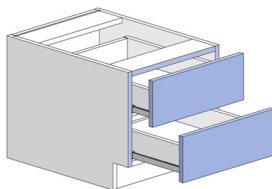
18" tall



BB24-2
BB27
BB30
BB33
BB36

2 Drawer Bench Cabinet

18" tall

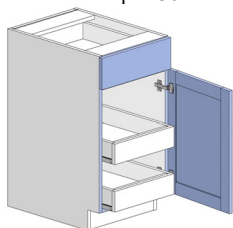


BD09-2 BD24-2
BD12-2 BD27-2
BD15-2 BD30-2
BD18-2 BD33-2
BD21-2 BD36-2

Standard base cabinets are 34-1/2" tall and 24" deep
Specify hinge L or R on single door cabinets

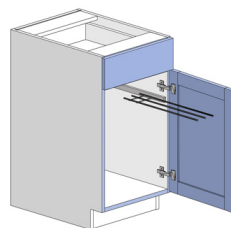
Roll Out Trays

Up to 2 ROT on base cabinets
Available on cabinets up to 36" wide



- 2 Roll Out Tray

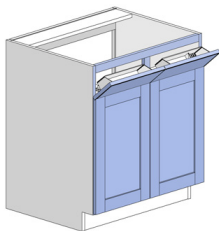
Towel Rack



-Towel Rack

Tilt Out Trays

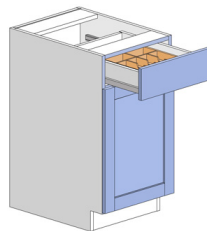
Available in sink cabinets



-1 Tilt Out Tray
-2 Tilt Out Tray

Cutlery Tray

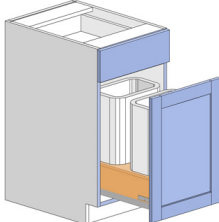
2 tier cutlery tray available in top base drawer (only 18" – 24" wide)
Not available with bread board or chopping block



-Cutlery

Waste Bin

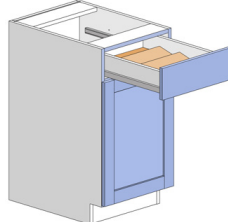
Waste 12 is a single waste bin
Waste 15, 18, 21 and 24 are double waste bins



-Waste

Drawer Spice Rack

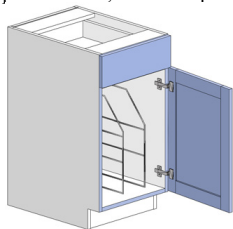
Not available with bread board or chopping block top drawer
Available up to 36" wide



- Drawer Spice Rack

Tray Divider

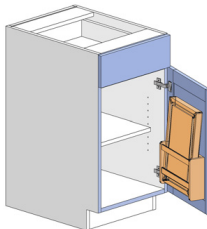
Available in 24" deep cabinets
1 TD in up to 9" wide, 2 TD in up to 24" wide



-Tray Dividers

Loose Cutting Board

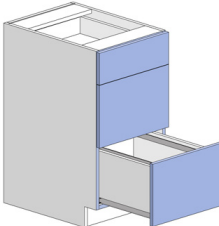
Cutting board mounted to cabinet door
Available on B15 and B18



-Loose Cutting Board

File Drawer Cabinet

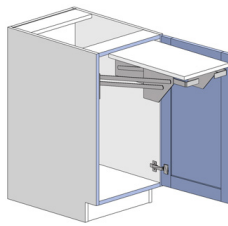
Available on D-2E and bottom 2 drawers of D-3
Only on 15" – 24" wide



-File Drawer

Base Mixer Shelf Cabinet

Available on B-FHD 15" – 24" wide

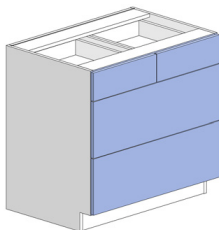


-Base Mixer Shelf

Standard base cabinets are 34-1/2" tall and 24" deep
Specify hinge L or R on single door cabinets

Split Top Drawer

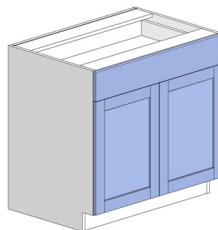
Available on drawer units 30" and wider



-Split Top Drawer

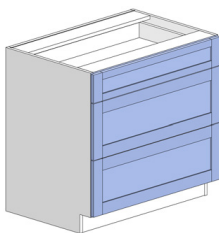
Single Top Drawer

Available on cabinets up to 36" wide



-Single Top Drawer

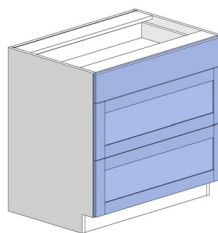
5 Piece Fronts



-5 Piece Fronts

Specify in Design Sets in
PDBid

5 Piece Fronts Bottom Only

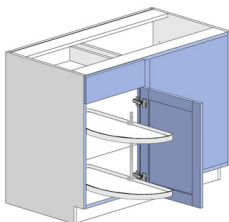


-5 Piece Fronts Bottom
Only

Specify in Design Sets in
PDBid

Half Moon Lazy Susan

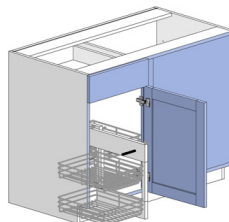
Only available on BSC42, BSC45 and BSC48
Available with slide out shelf



- Half Moon Lazy Susan
- Half Moon Lazy Susan Slide

Lazy Susan Optimizer

Only available on BSC45 and BSC48



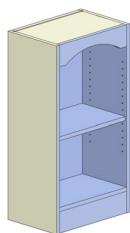
-Optimizer

Add Valance Top

Order with Specified valance

Not available in TFL

-EV shown



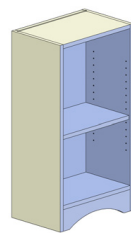
See cabinet mod
options in PDBid

Add Valance Toe

Order with Specified valance

Not available in TFL

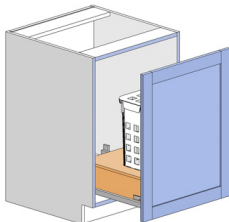
-EV shown



See cabinet mod
options in PDBid

Hamper

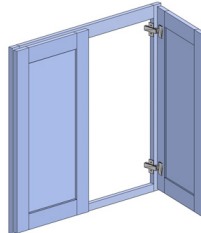
Only available in 18" and 24" base cabinets as well as 18" and 24" vanity
full height door cabinets



-Hamper

Face Frame & Door

Standard frame stiles and rails are 1-1/2"
with and 1-3/8" door overlay



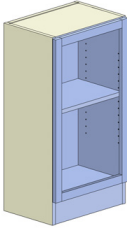
-FFD

Standard base cabinets are 34-1/2" tall and 24" deep
Specify hinge L or R on single door cabinets

Plant On Bookcase Frame

Plant on frame to make bookcase
flush with doors/fronts

Not available in TFL



-Plant on Frame

Cabinet Size Modifications

- Reduce cabinet depth
- Reduce cabinet height
- Reduce cabinet width

No Door on a Cabinet

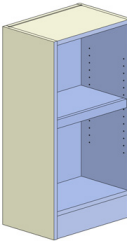
Cabinet may be ordered without doors

-NO LOWER DOOR

Shelf Nosing

1-1/2" tall nosing on finished interior shelves

Not available in TFL



-Shelf Nosing

Toe Modifications

- RECESS TOE use on bookcase for standard toe notch
- RECESS TOE 1/4" use to make a flush toe with TS8
- NON-RECESS TOE use to make a flush toe with BM4
- NO TOE to eliminate toe (specify box height)
- FINISHED NON-RECESSED for TFL non-recess

Finished Interior of Cabinet

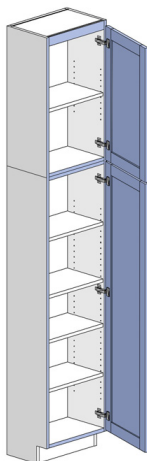
Cabinet interior to match exterior
Not available on drawers

-FINISHED INTERIOR

Standard utility cabinets are 24" deep. Utility cabinets will be sent as 2 cabinets
Specify hinge L or R on single door cabinets

Broom Closet 12" Deep

Five adjustable shelves



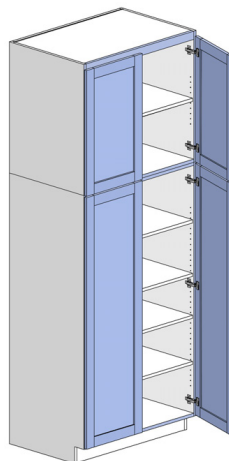
BC0996*12
BC1296*12
BC1596*12
BC1896*12
BC2196*12

BC0990*12
BC1290*12
BC1590*12
BC1890*12
BC2190*12

BC0984*12
BC1284*12
BC1584*12
BC1884*12
BC2184*12

Broom Closet

Five adjustable shelves



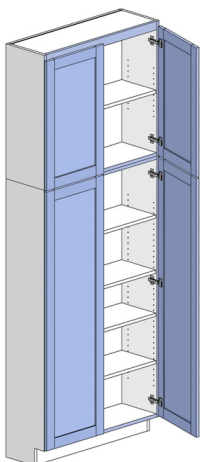
BC2496
BC2796
BC3096
BC3396
BC3696

BC2490
BC2790
BC3090
BC3390
BC3690

BC2484
BC2784
BC3084
BC3384
BC3684

Broom Closet 12" Deep

Five adjustable shelves



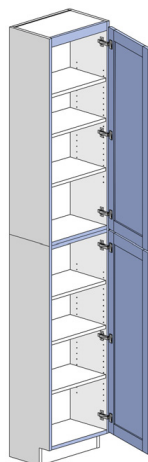
BC2496*12
BC2796*12
BC3096*12
BC3396*12
BC3696*12

BC2490*12
BC2790*12
BC3090*12
BC3390*12
BC3690*12

BC2484*12
BC2784*12
BC3084*12
BC3384*12
BC3684*12

Linen Closet 12" Deep

Six adjustable shelves



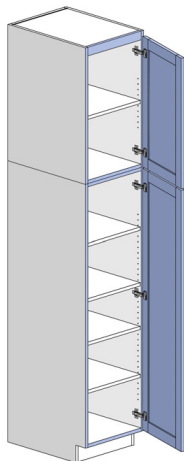
LC0996*12
LC1296*12
LC1596*12
LC1896*12
LC2196*12

LC0990*12
LC1290*12
LC1590*12
LC1890*12
LC2190*12

LC0984*12
LC1284*12
LC1584*12
LC1884*12
LC2184*12

Broom Closet

Five adjustable shelves



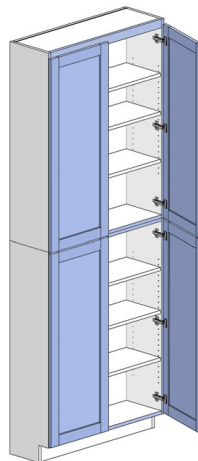
BC0996
BC1296
BC1596
BC1896
BC2196

BC0990
BC1290
BC1590
BC1890
BC2190

BC0984
BC1284
BC1584
BC1884
BC2184

Linen Closet 12" Deep

Six adjustable shelves



LC2496*12
LC2796*12
LC3096*12
LC3396*12
LC3696*12

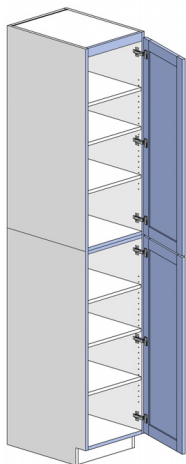
LC2490*12
LC2790*12
LC3090*12
LC3390*12
LC3690*12

LC2484*12
LC2784*12
LC3084*12
LC3384*12
LC3684*12

Standard utility cabinets are 24" deep. Utility cabinets will be sent as 2 cabinets
Specify hinge L or R on single door cabinets

Linen Closet

Six adjustable shelves



LC0996
LC1296
LC1596
LC1896
LC2196

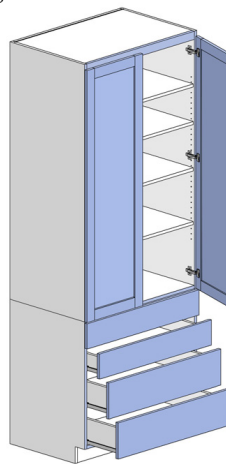
LC0990
LC1290
LC1590
LC1890
LC2190

LC0984
LC1284
LC1584
LC1884
LC2184

Linen Closet Drawer

Four adjustable shelves to 96" tall

Three adjustable shelves to 90" and 84" tall



LCD2496
LCD2796
LCD3096
LCD3396
LCD3696

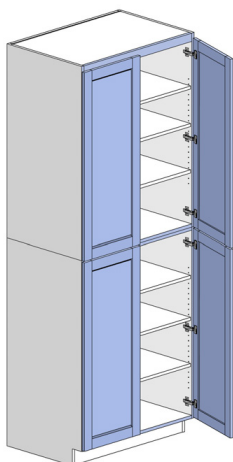
LCD2490
LCD2790
LCD3090
LCD3390
LCD3690

LCD2484
LCD2784
LCD3084
LCD3384
LCD3684

-Drawers match
D-4 base height

Linen Closet

Six adjustable shelves



LC2496
LC2796
LC3096
LC3396
LC3696

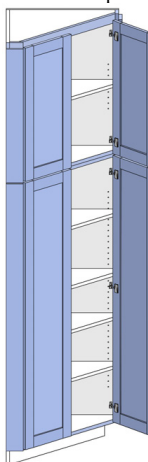
LC2490
LC2790
LC3090
LC3390
LC3690

LC2484
LC2784
LC3084
LC3384
LC3684

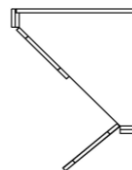
Broom Closet Angle Cabinet

Five adjustable shelves

Cabinet width and depth are the same



Top View



BCAC1296
BCAC1596
BCAC1896
BCAC2196
BCAC2496-2

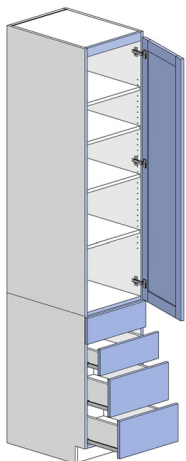
BCAC1290
BCAC1590
BCAC1890
BCAC2190
BCAC2490-2

BCAC1284
BCAC1584
BCAC1884
BCAC2184
BCAC2484-2

Linen Closet Drawer

Four adjustable shelves to 96" tall

Three adjustable shelves to 90" and 84" tall



LCD0996
LCD1296
LCD1596
LCD1896
LCD2196

LCD0990
LCD1290
LCD1590
LCD1890
LCD2190

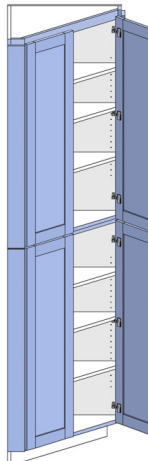
LCD0984
LCD1284
LCD1584
LCD1884
LCD2184

-Drawers match
D-4 base height

Linen Closet Angle Cabinet

Six adjustable shelves

Cabinet width and depth are the same



Top View



LCAC1296
LCAC1596
LCAC1896
LCAC2196
LCAC2496-2

LCAC1290
LCAC1590
LCAC1890
LCAC2190
LCAC2490-2

LCAC1284
LCAC1584
LCAC1884
LCAC2184
LCAC2484-2

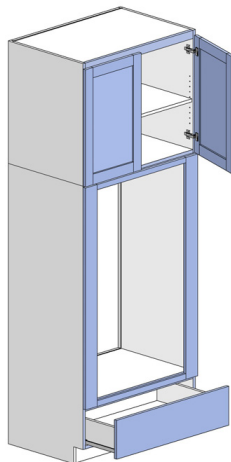
Standard utility cabinets are 24" deep. Utility cabinets will be sent as 2 cabinets
Specify hinge L or R on single door cabinets

Oven Cabinet Style A

Single opening with drawer bottom
Adjustable shelf count will vary with cutout size
Cutout size is required for this cabinet

If cutout is over 1-1/2" smaller than cabinet width an appliance frame will be added

Oven cutout starts at 11-3/4" up from floor unless otherwise specified



OCA2796
OCA3096
OCA3396
OCA3696

OCA2790
OCA3090
OCA3390
OCA3690

OCA2784
OCA3084
OCA3384
OCA3684

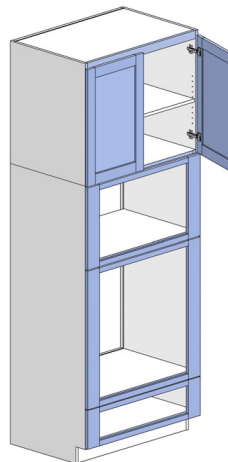
Oven Cabinet Style D

Triple opening with doors above
Adjustable shelf count will vary with cutout size
Cutout size is required for this cabinet

If cutout is over 1-1/2" smaller than cabinet width an appliance frame will be added

1-1/2" Nose bottom shelf

Cutout starts 5-1/2" up from floor



OCD2796
OCD3096
OCD3396
OCD3696

OCD2790
OCD3090
OCD3390
OCD3690

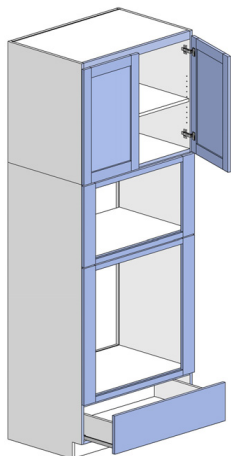
OCD2784
OCD3084
OCD3384
OCD3684

Oven Cabinet Style B

Double opening with drawer bottom
Adjustable shelf count will vary with cutout size
Cutout size is required for this cabinet

If cutout is over 1-1/2" smaller than cabinet width an appliance frame will be added

Oven cutout starts at 11-3/4" up from floor unless otherwise specified



OCB2796
OCB3096
OCB3396
OCB3696

OCB2790
OCB3090
OCB3390
OCB3690

OCB2784
OCB3084
OCB3384
OCB3684

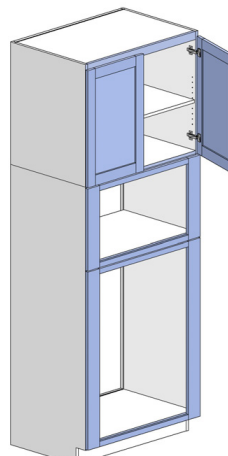
Oven Cabinet Style E

Double opening with doors above
Adjustable shelf count will vary with cutout size
Cutout size is required for this cabinet

If cutout is over 1-1/2" smaller than cabinet width an appliance frame will be added

1-1/2" Nose bottom shelf

Cutout starts 5-1/2" up from floor



OCE2796
OCE3096
OCE3396
OCE3696

OCE2790
OCE3090
OCE3390
OCE3690

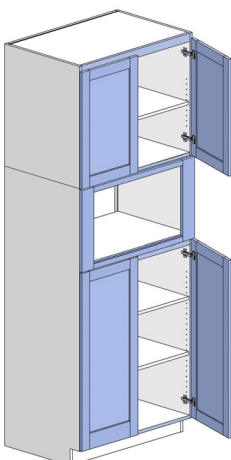
OCE2784
OCE3084
OCE3384
OCE3684

Oven Cabinet Style C

Single opening with door bottom
Adjustable shelf count will vary with cutout size
Cutout size is required for this cabinet

If cutout is over 1-1/2" smaller than cabinet width an appliance frame will be added

Oven cutout starts at 35-3/4" up from floor unless otherwise specified



OCC2796
OCC3096
OCC3396
OCC3696

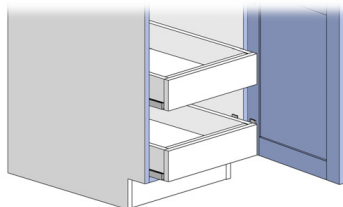
OCC2790
OCC3090
OCC3390
OCC3690

OCC2784
OCC3084
OCC3384
OCC3684

Standard utility cabinets are 24" deep. Utility cabinets will be sent as 2 cabinets
Specify hinge L or R on single door cabinets

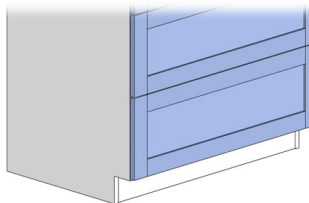
Roll Out Trays

Up to 3 ROT on linen closets, Up to 5 ROT on broom closets
Available in cabinets 36" wide and under



-3 Roll Out Trays
-5 Roll Out Trays

5 Piece Fronts



-5 Piece Fronts

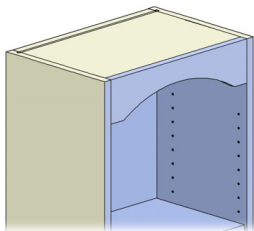
Specify in Design Sets in
PDBid

Add Valance Top

Order with specified valance

Not available in TFL

-EV shown

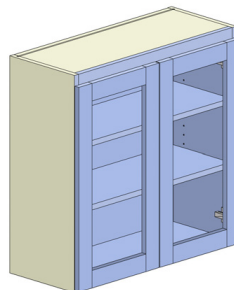


See cabinet mod
options in PDBid

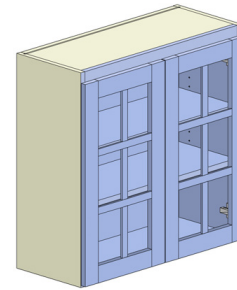
Cut For Glass Doors

CFG slats only available with square
inside frame edge detail

Only FULL and TOP1/3 available in TFL



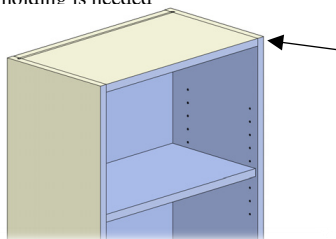
CFG-FULL



CFG-MULLION

No Fir Down

This is used on the bottom cabinet when cabinets are stacked or when no
crown molding is needed

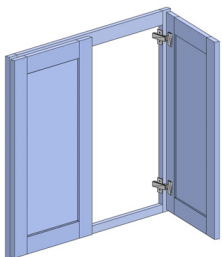


- No Fir Down

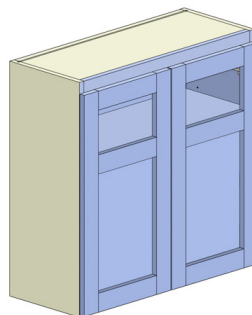
Face Frame and Door

Standard frame stiles and rails are 1-1/2"
with 1-3/8" door overlay

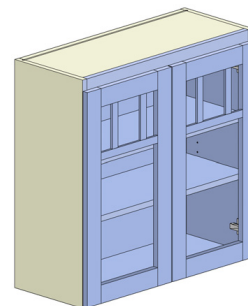
Not available in TFL



-FFD



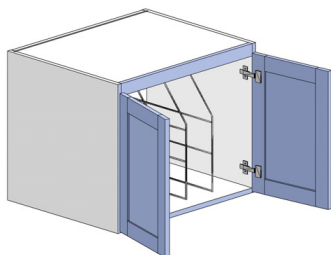
CFG-TOP1/3



CFG-COUNTRY

Tray Divider

6 TD in 30" and 36" wide



-Tray Dividers

Standard utility cabinets are 24" deep. Utility cabinets will be sent as 2 cabinets

Specify hinge L or R on single door cabinets

Finished Interior of Cabinet

Cabinet interior to match exterior

-FINISHED INTERIOR

No Door on a Cabinet

Cabinet may be ordered without doors

-NO UPPER DOOR

-NO LOWER DOOR

Toe Modifications

-RECESS TOE use on bookcase for standard toe notch

-RECESS TOE 1/4" use to make a flush toe with TS8

-NON RECESS TOE use to make a flush toe with BM4

-NO TOE to eliminate toe (specify box height)

-FINISHED NON-RECESSED for TFL non-recess

Cabinet Size Modifications

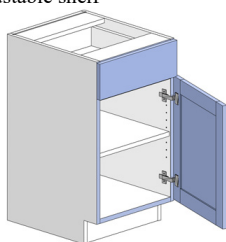
Reduce cabinet depth or height

Standard vanity cabinets are 31-1/2" tall and 21" deep
Specify hinge L or R on single door cabinets

Adult Vanity Base Cabinet

34-1/2" tall

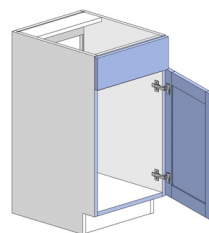
One adjustable shelf



AVB09
AVB12
AVB15
AVB18
AVB21
AVB24

Adult Vanity Sink Cabinet

34-1/2" tall, no back

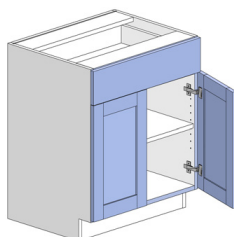


AVS15
AVS18
AVS21
AVS24

Adult Vanity Base Cabinet

34-1/2" tall

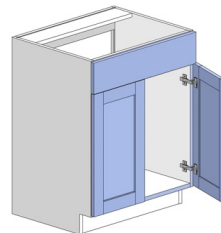
One adjustable shelf



AVB24-2
AVB27

Adult Vanity Sink Cabinet

34-1/2" tall, no back

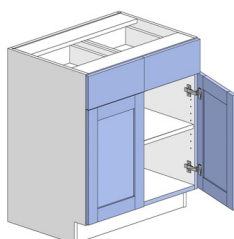


AVS24-2
AVS27

Adult Vanity Base Cabinet

34-1/2" tall

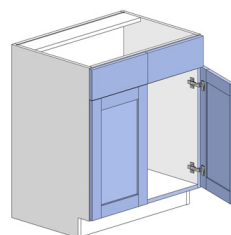
One adjustable shelf



AVB30
AVB33
AVB36
AVB39
AVB42
AVB45
AVB48

Adult Vanity Sink Cabinet

34-1/2" tall, no back

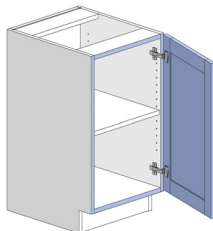


AVS30
AVS33
AVS36
AVS39
AVS42
AVS45
AVS48

Adult Vanity Base FHD Cabinet

34-1/2" tall

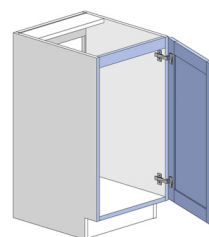
One adjustable shelf



AVB09-FHD
AVB12-FHD
AVB15-FHD
AVB18-FHD
AVB21-FHD
AVB24-FHD

Adult Vanity Sink FHD Cabinet

34-1/2" tall, no back

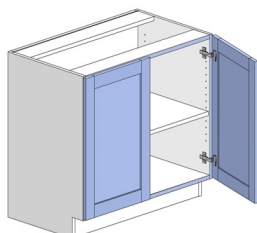


AVS15-FHD
AVS18-FHD
AVS21-FHD
AVS24-FHD

Adult Vanity Base FHD Cabinet

34-1/2" tall

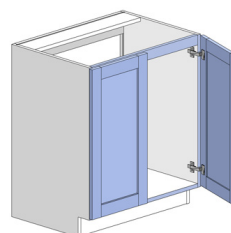
One adjustable shelf



AVB24-2FHD
AVB27-FHD
AVB30-FHD
AVB33-FHD
AVB36-FHD
AVB39-FHD
AVB42-FHD
AVB45-FHD
AVB48-FHD

Adult Vanity Sink FHD Cabinet

34-1/2" tall, no back

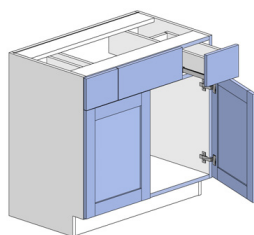


AVS24-2FHD
AVS27-FHD
AVS30-FHD
AVS33-FHD
AVS36-FHD
AVS39-FHD
AVS42-FHD
AVS45-FHD
AVS48-FHD

Standard vanity cabinets are 31-1/2" tall and 21" deep
Specify hinge L or R on single door cabinets

Adult Vanity Combo Cabinet

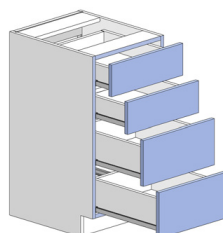
34-1/2" tall, no back



	Drawer Front	Sink Front
AVC33 -	7-1/2"	18"
AVC36 -	9"	18"
AVC39 -	9"	21"
AVC42 -	10-1/2"	21"
AVC45 -	12"	21"
AVC48 -	13-1/2"	21"

Adult Vanity 4 Drawer Cabinet

34-1/2" tall

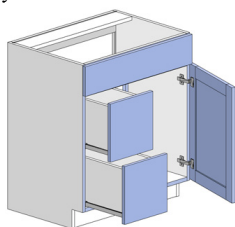


AVD09-4
AVD12-4
AVD15-4
AVD18-4
AVD21-4
AVD24-4
AVD27-4
AVD30-4
AVD33-4
AVD36-4

Adult Vanity Sink Drawer

34-1/2" tall, no back
Specify drawer side

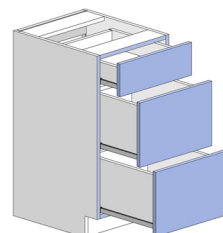
-Right shown



	Drawer Front	Door
AVSD24-3 -	9"	15"
AVSD27-3 -	10-1/2"	16-1/2"
AVSD30-3 -	12"	18"
AVSD33-3 -	13-1/2"	19-1/2"
AVSD36-3 -	15"	21"
AVSD39-3 -	16-1/2"	22-1/2"
AVSD42-3 -	18"	24"
AVSD45-3 -	19-1/2"	25-1/2"
AVSD48-3 -	21"	27"

Adult Vanity 3 Drawer Cabinet

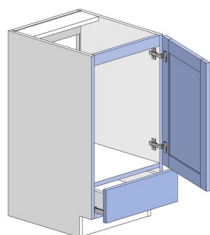
34-1/2" tall



AVD09-3
AVD12-3
AVD15-3
AVD18-3
AVD21-3
AVD24-3
AVD27-3
AVD30-3
AVD33-3
AVD36-3

Adult Vanity Sink Inverted

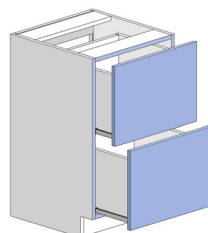
34-1/2" tall, no back



AVSI15
AVSI18
AVSI21
AVSI24

Adult Vanity 2 Drawer Cabinet

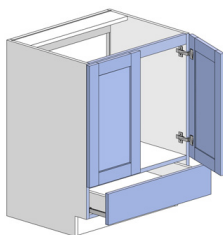
34-1/2" tall



AVD09-2E
AVD12-2E
AVD15-2E
AVD18-2E
AVD21-2E
AVD24-2E
AVD27-2E
AVD30-2E
AVD33-2E
AVD36-2E

Adult Vanity Sink Inverted

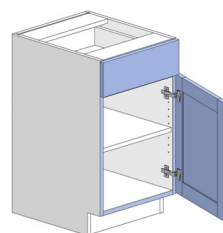
34-1/2" tall, no back



AVSI24-2
AVSI27

Vanity Base Cabinet

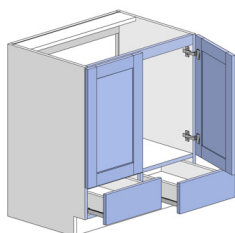
One adjustable shelf



VB09
VB12
VB15
VB18
VB21
VB24

Adult Vanity Sink Inverted

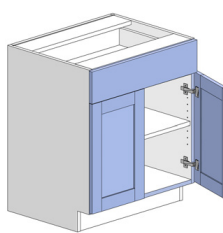
34-1/2" tall, no back



AVSI30
AVSI33
AVSI36
AVSI39
AVSI42
AVSI45
AVSI48

Vanity Base Cabinet

One adjustable shelf

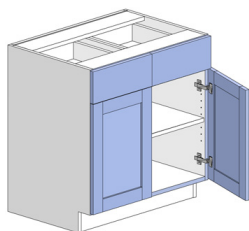


VB24-2
VB27

Standard vanity cabinets are 31-1/2" tall and 21" deep
Specify hinge L or R on single door cabinets

Vanity Base Cabinet

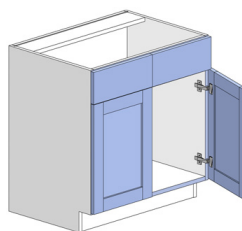
One adjustable shelf



VB30
VB33
VB36
VB39
VB42
VB45
VB48

Vanity Sink Cabinet

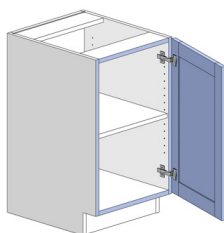
No back



VS30
VS33
VS36
VS39
VS42
VS45
VS48

Vanity Base FHD Cabinet

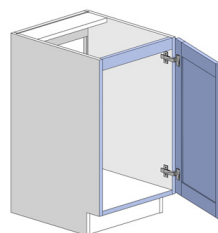
One adjustable shelf



VB09-FHD
VB12-FHD
VB15-FHD
VB18-FHD
VB21-FHD
VB24-FHD

Vanity Sink FHD Cabinet

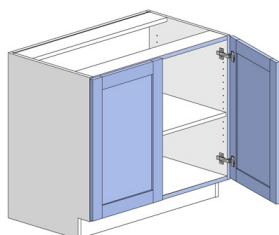
No back



VS15-FHD
VS18-FHD
VS21-FHD
VS24-FHD

Vanity Base FHD Cabinet

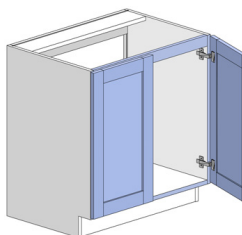
One adjustable shelf



VB24-2FHD
VB27-FHD
VB30-FHD
VB33-FHD
VB36-FHD
VB39-FHD
VB42-FHD
VB45-FHD
VB48-FHD

Vanity Sink FHD Cabinet

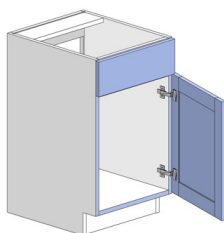
No back



VS24-2FHD
VS27-FHD
VS30-FHD
VS33-FHD
VS36-FHD
VS39-FHD
VS42-FHD
VS45-FHD
VS48-FHD

Vanity Sink Cabinet

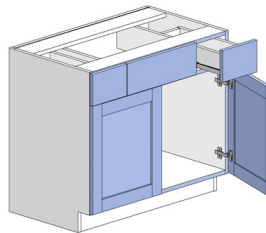
No back



VS15
VS18
VS21
VS24

Vanity Combo Cabinet

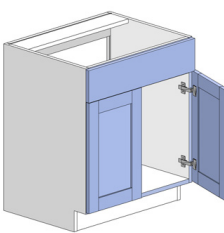
No back



	Drawer Front	Sink Front
VC33 -	7-1/2"	18"
VC36 -	9"	18"
VC39 -	9"	21"
VC42 -	10-1/2"	21"
VC45 -	12"	21"
VC48 -	13-1/2"	21"

Vanity Sink Cabinet

No back



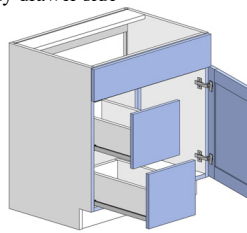
VS24-2
VS27

Vanity Sink Drawer

No back

Specify drawer side

-Left shown

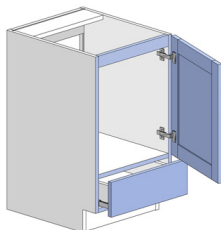


	Drawer Front	Door
AVSD24-3 -	9"	15"
AVSD27-3 -	10-1/2"	16-1/2"
AVSD30-3 -	12"	18"
AVSD33-3 -	13-1/2"	19-1/2"
AVSD36-3 -	15"	21"
AVSD39-3 -	16-1/2"	22-1/2"
AVSD42-3 -	18"	24"
AVSD45-3 -	19-1/2"	25-1/2"
AVSD48-3 -	21"	27"

Standard vanity cabinets are 31-1/2" tall and 21" deep
Specify hinge L or R on single door cabinets

Vanity Sink Inverted

No back

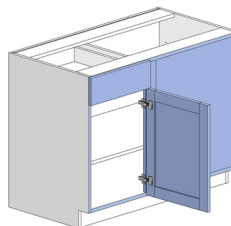


VSI15
VSI18
VSI21
VSI24

Vanity Square Corner Cabinet

24" Full blind panel
One adjustable shelf

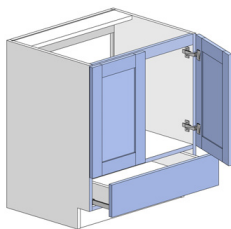
-Left
shown



VSC36
VSC39
VSC42
VSC45
VSC48

Vanity Sink Inverted

No back

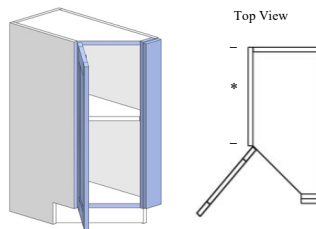


VSI24-2
VSI27

Vanity Angle Cabinet

One adjustable shelf

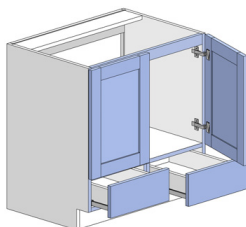
-Left
shown



VA12 * = 12-5/8"
VA15 * = 9-5/8"
VA18 * = 6-5/8"

Vanity Sink Inverted

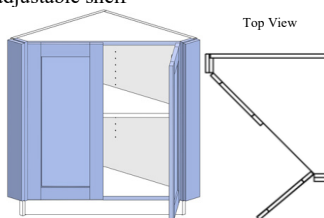
No back



VSI30
VSI33
VSI36
VSI39
VSI42
VSI45
VSI48

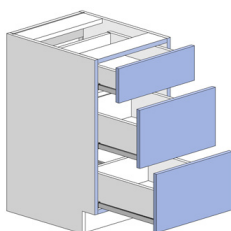
Vanity Angle Corner Cabinet

Cabinet width and depth are the same
One adjustable shelf



VAC12*12
VAC15*15
VAC18*18
VAC21*21

Vanity 3 Drawer Cabinet

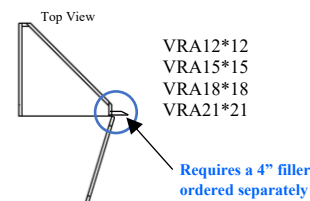
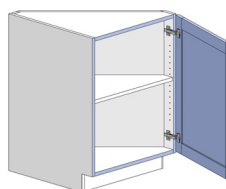


VD09-3
VD12-3
VD15-3
VD18-3
VD21-3
VD24-3
VD27-3
VD30-3
VD33-3
VD36-3

Vanity Returned Angle Cabinet

One Adjustable Shelf
Cabinet width and depth are the same

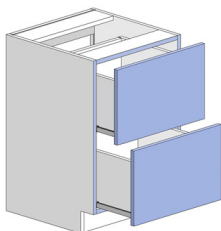
-Right
shown



VRA12*12
VRA15*15
VRA18*18
VRA21*21

Requires a 4" filler
ordered separately

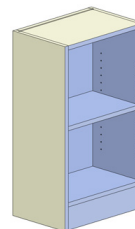
Vanity 2 Drawer Cabinet



VD09-2E
VD12-2E
VD15-2E
VD18-2E
VD21-2E
VD24-2E
VD27-2E
VD30-2E
VD33-2E
VD36-2E

Vanity Bookcase

12" deep cabinet with one adjustable shelf
Toe is finished, non-recessed

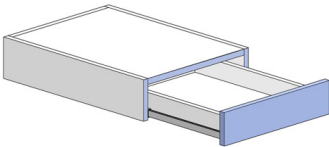


VBK09
VBK12
VBK15
VBK18
VBK21
VBK24
VBK27
VBK30
VBK33
VBK36

Standard vanity cabinets are 31-1/2" tall and 21" deep
Specify hinge L or R on single door cabinets

Desk Drawer

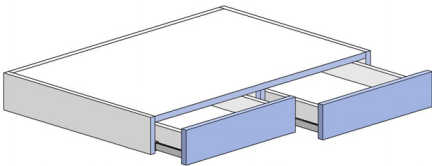
4-1/2" tall



- | | |
|--------|--------|
| DD1521 | DD1524 |
| DD1821 | DD1824 |
| DD2121 | DD2124 |
| DD2421 | DD2424 |
| DD2721 | DD2724 |
| DD3021 | DD3024 |
| DD3321 | DD3324 |

Desk Drawer

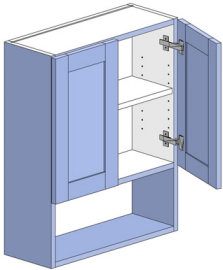
4-1/2" tall



- | |
|----------|
| DD3021-2 |
| DD3024-2 |
| DD3321-2 |
| DD3324-2 |
| DD3621-2 |
| DD3624-2 |

Over John Cabinet

9" deep,
8-1/4" open bottom
One adjustable shelf

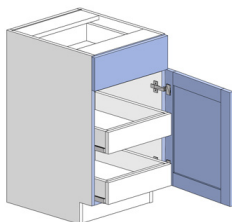


OJC2430

Standard vanity cabinets are 31-1/2" tall and 21" deep
Specify hinge L or R on single door cabinets

Roll Out Trays

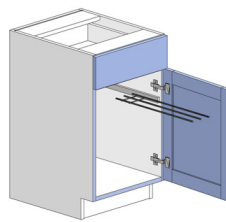
Up to 2 ROT on base cabinets
Available on cabinets up to 36" wide



-2 Roll Out Tray

Towel Rack

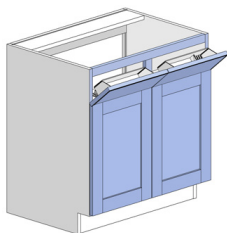
Available in 9", 12" & 15"



-Towel Rack

Tilt Out Trays

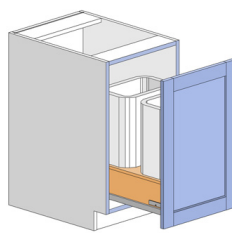
Available in sink cabinets



-2 Tilt Out Tray

Waste Bin

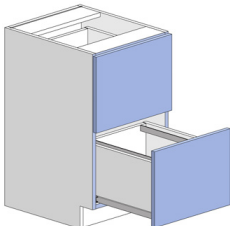
Single 35 qt. waste bin available in 15" and 18" adult height or FHD
Hardware is soft close



-Waste

File Drawer Cabinet

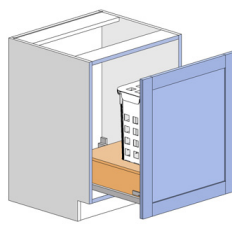
Available on D-2E (and bottom 2 drawers of D-3 for adult height)
Only on 18" – 24" wide



-File Drawer

Hamper

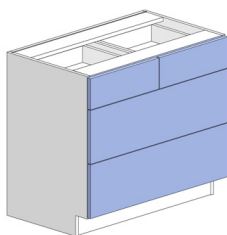
Available in 18" and 24" adult height or FHD
Hardware is soft close



-Hamper

Split Top Drawer

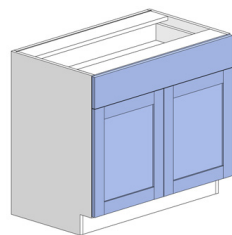
Available on drawer units 24" and wider



-Split Top Drawer

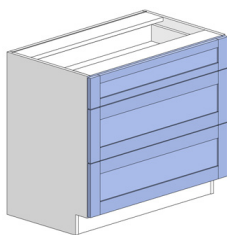
Single Top Drawer

Available on cabinets up to 36" wide



-Single Top Drawer

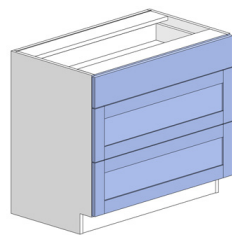
5 Piece Fronts



-5 Piece Fronts

Specify in Design Sets in
PDBid

5 Piece Fronts Bottom Only



-5 Piece Fronts Bottom
Only

Specify in Design Sets in
PDBid

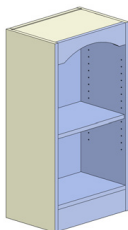
Standard vanity cabinets are 31-1/2" tall and 21" deep
Specify hinge L or R on single door cabinets

Add Valance Top

Order with Specified valance

Not available in TFL

-EV shown



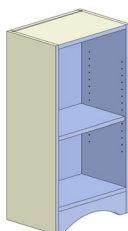
See cabinet mod options in PDBid

Add Valance Toe

Order with Specified valance

Not available in TFL

-EV shown

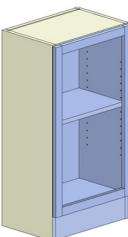


See cabinet mod options in PDBid

Plant On Bookcase Frame

Plant on frame to make bookcase flush with doors/fronts

Not available in TFL

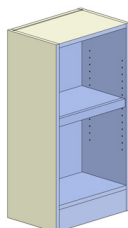


-BK Frame

Shelf Nosing

1-1/2" tall nosing on finished interior shelves

Not available in TFL

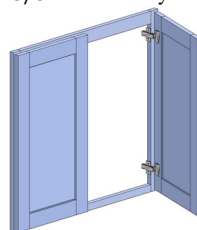


-Shelf Nosing

Face Frame & Door

Standard frame stiles and rails are 1-1/2" with and 1-3/8" door overlay

Not available in TFL



-FFD

Finished Interior of Cabinet

Cabinet interior to match exterior
Not available on drawers

-FINISHED INTERIOR

Cabinet Size Modifications

Increase depth on a wall or bookcase up to 24"
Reduce cabinet depth

Toe Modifications

- RECESS TOE use on bookcase for standard toe notch
- RECESS TOE 1/4" use to make a flush toe with TS8
- NON RECESS TOE use to make a flush toe with BM4
- NO TOE to eliminate toe (specify box height)
- FINISHED NON-RECESSED for TFL non-recess

Drawer Box Sizes

Standard drawer box depth 12", 15", 18", & 21"
Standard height for Melamine 3", 4", 6" & 10"
Standard height for Dovetail 3-1/4", 5-1/4" & 9-1/4"

No Door on a Cabinet

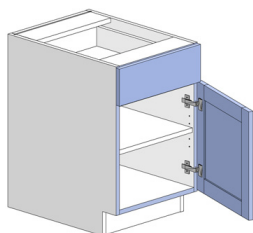
Cabinet may be ordered without doors

-NO LOWER DOOR

Standard office cabinets are 28-1/2" tall and 24" deep
Specify hinge L or R on single door cabinets

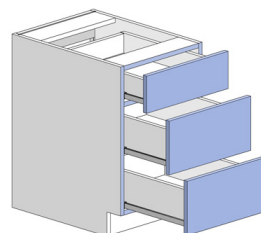
Office Base Cabinet

One adjustable shelf



OB09
OB12
OB15
OB18
OB21
OB24

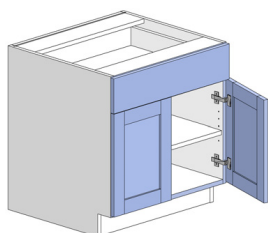
Office Three Drawer Cabinet



OD09-3 OD24-3
OD12-3 OD27-3
OD15-3 OD30-3
OD18-3 OD33-3
OD21-3 OD36-3

Office Base Cabinet

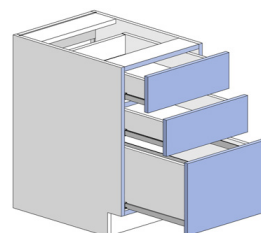
One adjustable shelf



OB24-2
OB27

Office Three Drawer Style B Cabinet

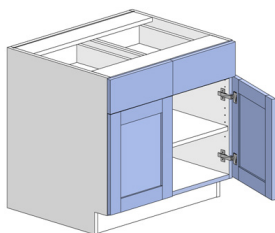
Able to fit a file in the bottom



OD09-3B OD24-3B
OD12-3B OD27-3B
OD15-3B OD30-3B
OD18-3B OD33-3B
OD21-3B OD36-3B

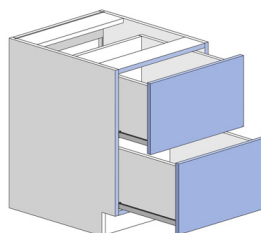
Office Base Cabinet

One adjustable shelf



OB30
OB33
OB36
OB39
OB42
OB45
OB48

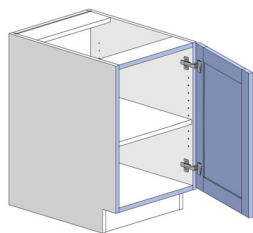
Office Two Drawer Cabinet



OD09-2E OD24-2E
OD12-2E OD27-2E
OD15-2E OD30-2E
OD18-2E OD33-2E
OD21-2E OD36-2E

Office Base Full Height Door Cabinet

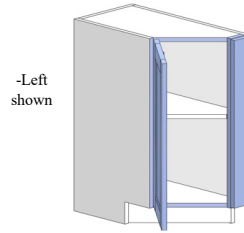
One adjustable shelf



OB09-FHD
OB12-FHD
OB15-FHD
OB18-FHD
OB21-FHD
OB24-FHD

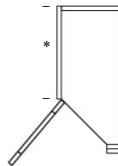
Office Base Angle Cabinet

One adjustable shelf



-Left
shown

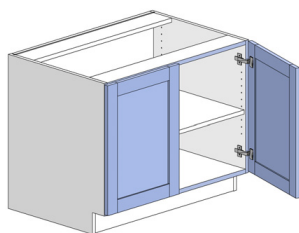
Top View



OBA12 * = 15-5/8"
OBA15 * = 12-5/8"
OBA18 * = 9-5/8"
OBA21 * = 6-5/8"

Office Base Full Height Door Cabinet

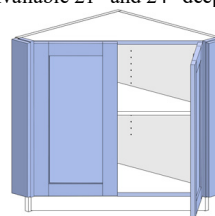
One adjustable shelf



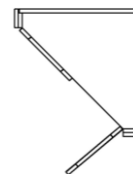
OB24-FHD
OB27-FHD
OB30-FHD
OB33-FHD
OB36-FHD
OB39-FHD
OB42-FHD
OB45-FHD
OB48-FHD

Office Base Angle Corner Cabinet

One adjustable shelf
Available 21" and 24" deep



Top View

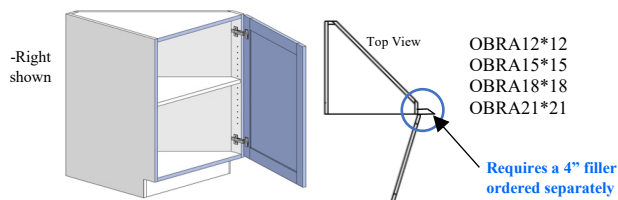


OBAC12*12
OBAC15*15
OBAC18*18
OBAC21*21
OBAC24*24-2

Standard office cabinets are 28-1/2" tall and 24" deep
Specify hinge L or R on single door cabinets

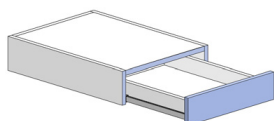
Office Base Returned Angle Cabinet

One Adjustable Shelf
Cabinet width and depth are the same



Desk Drawer Cabinet

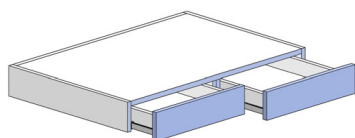
4-1/2" tall
Available 21" or 24" deep



DD1521	DD1524
DD1821	DD1824
DD2121	DD2124
DD2421	DD2424
DD2721	DD2724
DD3021	DD3024
DD3321	DD3324

Desk Drawer Cabinet

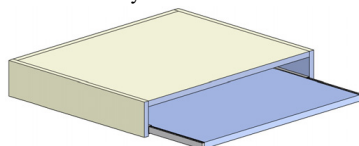
4-1/2" tall
Available 21" or 24" deep



DD3021-2
DD3024-2
DD3321-2
DD3324-2
DD3621-2
DD3624-2

Keyboard Tray

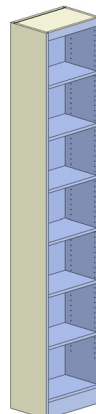
4-1/2" tall
Available 21" or 24" deep
Finished tray



KBT2121	KBT2124
KBT2421	KBT2424
KBT2721	KBT2724
KBT3021	KBT3024
KBT3321	KBT3324
KBT3621	KBT3624

Bookcase

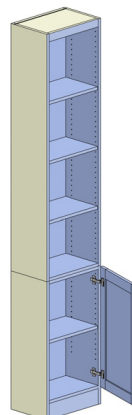
12" deep cabinet
6 adjustable shelves
Toe is finished and non-recessed



BK0984	BK0990	BK0996
BK1284	BK1290	BK1296
BK1584	BK1590	BK1596
BK1884	BK1890	BK1896
BK2184	BK2190	BK2196
BK2484	BK2490	BK2496
BK2784	BK2790	BK2796
BK3084	BK3090	BK3096
BK3384	BK3390	BK3396
BK3684	BK3690	BK3696

Bookcase with Door Bottom

12" deep cabinet
84" tall with 4 adjustable shelves
90" and 96" tall with 5 adjustable shelves
Toe is finished and non-recessed

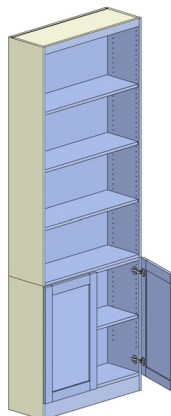


BKD0984	BKD0990	BKD0996
BKD1284	BKD1290	BKD1296
BKD1584	BKD1590	BKD1596
BKD1884	BKD1890	BKD1896
BKD2184	BKD2190	BKD2196

-This cabinet will be split and sent as two cabinets

Bookcase with Doors Bottom

12" deep cabinet
84" tall with 4 adjustable shelves
90" and 96" tall with 5 adjustable shelves
Toe is finished and non-recessed



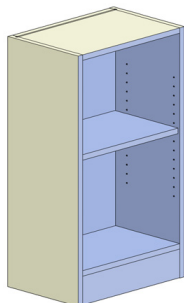
BKD2484	BKD2490	BKD2496
BKD2784	BKD2790	BKD2796
BKD3084	BKD3090	BKD3096
BKD3384	BKD3390	BKD3396
BKD3684	BKD3690	BKD3696

-This cabinet will be split and sent as two cabinets

Standard office cabinets are 28-1/2" tall and 24" deep
Specify hinge L or R on single door cabinets

Bookcase

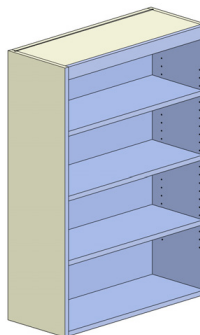
Available in office, vanity and base height
12" deep
One adjustable shelf
Toe is Finished and non-recessed



OBK09	VBK09	BBK09
OBK12	VBK12	BBK12
OBK15	VBK15	BBK15
OBK18	VBK18	BBK18
OBK21	VBK21	BBK21
OBK24	VBK24	BBK24
OBK27	VBK27	BBK27
OBK30	VBK30	BBK30
OBK33	VBK33	BBK33
OBK36	VBK36	BBK36

Wall Book Case

12" deep
39", 42", 45" and 48" tall
3 adjustable shelves

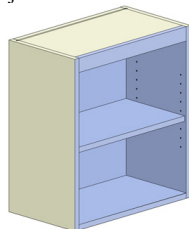


WBK0939	WBK0942
WBK1239	WBK1242
WBK1539	WBK1542
WBK1839	WBK1842
WBK2193	WBK2142
WBK2493	WBK2442
WBK2739	WBK2742
WBK3039	WBK3042
WBK3339	WBK3342
WBK3639	WBK3642

WBK0945	WBK0948
WBK1245	WBK1248
WBK1545	WBK1548
WBK1845	WBK1848
WBK2145	WBK2148
WBK2445	WBK2448
WBK2745	WBK2748
WBK3045	WBK3048
WBK3345	WBK3348
WBK3645	WBK3648

Wall Book Case

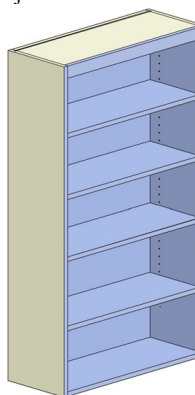
12" deep
21" and 24" tall
1 adjustable shelf



WBK0921	WBK0924
WBK1221	WBK1224
WBK1521	WBK1524
WBK1821	WBK1824
WBK2121	WBK2124
WBK2421	WBK2424
WBK2721	WBK2724
WBK3021	WBK3024
WBK3321	WBK3324
WBK3621	WBK3624

Wall Book Case

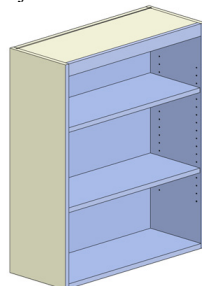
12" deep
54" and 60" tall
4 adjustable shelves



WBK0954	WBK0960
WBK1254	WBK1260
WBK1554	WBK1560
WBK1854	WBK1860
WBK2154	WBK2160
WBK2454	WBK2460
WBK2754	WBK2760
WBK3054	WBK3060
WBK3354	WBK3360
WBK3654	WBK3660

Wall Book Case

12" deep
27", 30", 33" and 36" tall
2 adjustable shelves

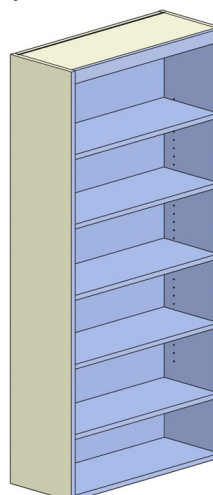


WBK0927	WBK0930
WBK1227	WBK1230
WBK1527	WBK1530
WBK1827	WBK1830
WBK2127	WBK2130
WBK2427	WBK2430
WBK2727	WBK2730
WBK3027	WBK3030
WBK3327	WBK3330
WBK3627	WBK3630

WBK0933	WBK0936
WBK1233	WBK1236
WBK1533	WBK1536
WBK1833	WBK1836
WBK2133	WBK2136
WBK2433	WBK2436
WBK2733	WBK2736
WBK3033	WBK3036
WBK3333	WBK3336
WBK3633	WBK3636

Wall Book Case

12" deep
66" and 72" tall
5 adjustable shelves

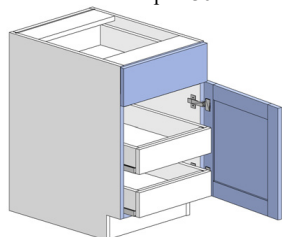


WBK0966	WBK0972
WBK1266	WBK1272
WBK1566	WBK1572
WBK1866	WBK1872
WBK2166	WBK2172
WBK2466	WBK2472
WBK2766	WBK2772
WBK3066	WBK3072
WBK3366	WBK3372
WBK3666	WBK3672

Standard office cabinets are 28-1/2" tall and 24" deep
Specify hinge L or R on single door cabinets

Roll Out Trays

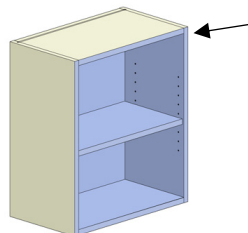
Up to 2 ROT on base cabinets
Available on cabinets up to 36" wide



-2 Roll Out Tray

No Fir Down

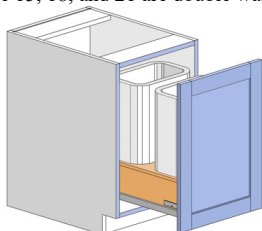
Upper cabinets may be ordered with no fir down. This is used on the bottom cabinet when cabinets are stacked or when no crown molding is needed



-No Fir Down

Waste Bin

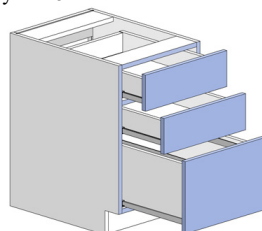
Waste 12 is a single waste bin
Waste 15, 18, and 21 are double waste



-Waste

File Drawer Cabinet

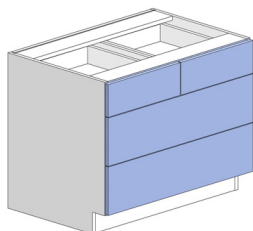
Available on OD-2E drawers and OD3-B bottom drawer
Only on 15" - 24" wide



-File Drawer

Split Top Drawer

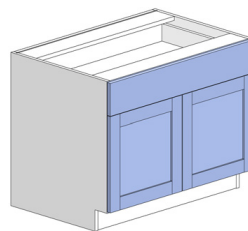
Available on drawer units 24" and wider



-Split Top Drawer

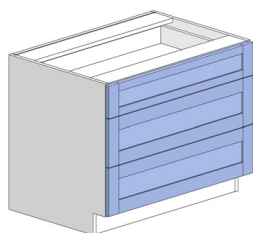
Single Top Drawer

Available on cabinets up to 36" wide



-Single Top Drawer

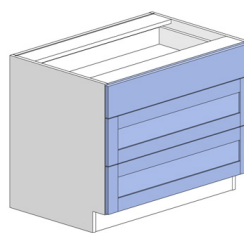
5 Piece Fronts



-5 Piece Fronts

Specify in Design Sets in
PDBid

5 Piece Fronts Bottom Only



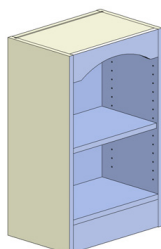
-5 Piece Fronts Bottom
Only

Specify in Design Sets in
PDBid

Add Valance Top

Order with Specified valance

Not available in TFL



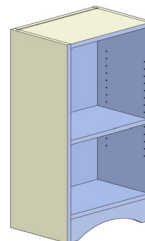
-EV shown

See cabinet mod
options in PDBid

Add Valance Toe

Order with Specified valance

Not available in TFL



-EV shown

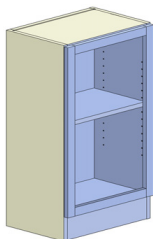
See cabinet mod
options in PDBid

Standard office cabinets are 28-1/2" tall and 24" deep
Specify hinge L or R on single door cabinets

Plant On Bookcase Frame

Plant on frame to make bookcase
flush with doors/fronfs

Not available in TFL

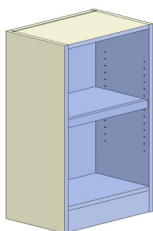


-BK Frame

Shelf Nosing

1-1/2" tall nosing on finished interior shelves

Not available in TFL

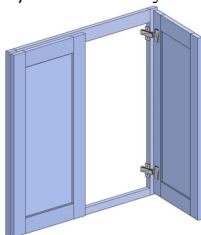


-Shelf Nosing

Face Frame & Door

Standard frame stiles and rails are 1-1/2"
with and 1-3/8" door overlay

Not available in TFL



-FFD

No Door on a Cabinet

Cabinet may be ordered without doors

-NO LOWER DOOR

Toe Modifications

- RECESS TOE use on bookcase for standard toe notch
- RECESS TOE 1/4" use to make a flush toe with TS8
- NON RECESS TOE use to make a flush toe with BM4
- NO TOE to eliminate toe (specify box height)
- FINISHED NON-RECESSED for TFL non-recess

Drawer Box Sizes

Standard drawer box depth 12", 15", 18", & 21"
Standard height for Melamine 3", 4", 6" & 10"
Standard height for Dovetail 3-1/4", 5-1/4" & 9-1/4"

Finished Interior of Cabinet

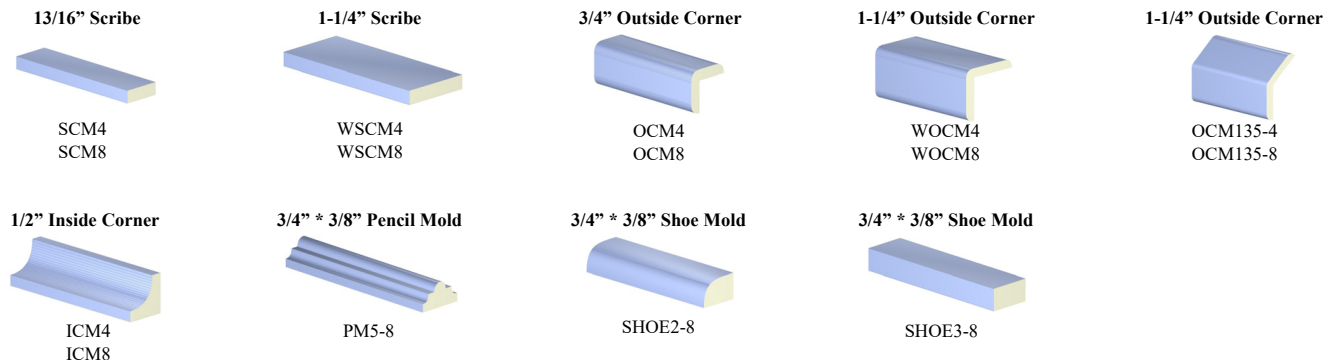
Cabinet interior to match exterior
Not available on drawers

-FINISHED INTERIOR

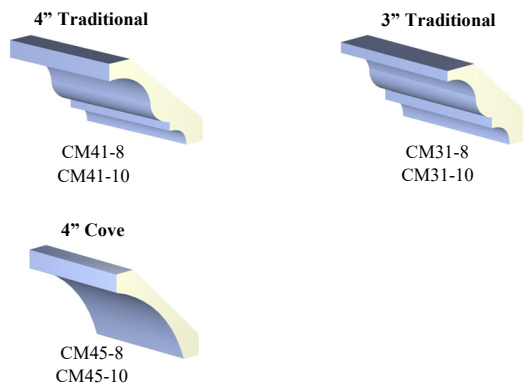
Cabinet Size Modifications

Increase depth on a wall or bookcase up to 24"
Reduce cabinet depth

Trim Moldings



Crown Moldings

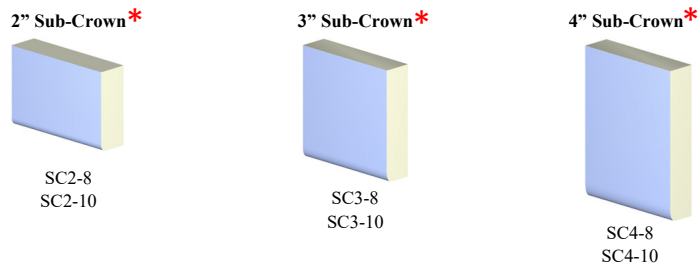


Crown	Height	Depth
CM31	2-3/8"	1-15/16"
CM41	3-1/16"	2-9/16"
CM45	2-13/16"	2-13/16"

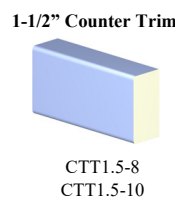
Note: To figure tall cabinet height use this formula

Ceiling Height	Example: 93-1/2"	Ceiling Height
-Crown Height	-3-1/16"	CM41 Crown Height
+ 1-1/4"	+1-1/4"	FD Gap on Cabinet
Tall Cabinet Height	91-11/16"	Height
Rounded Down to 1/4"	91-1/2"	Tall Cabinet Height

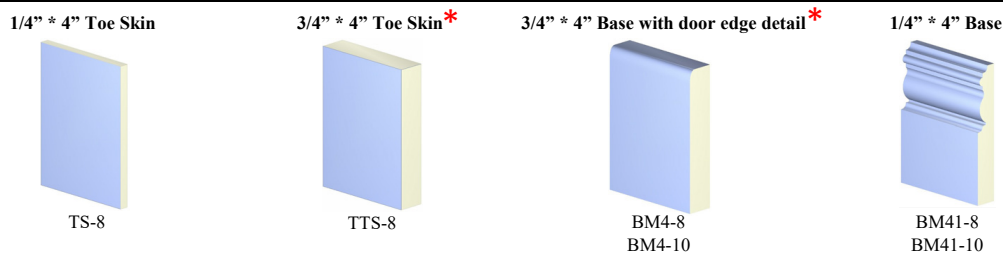
Sub-Crown Moldings - Molding detail matches door edge



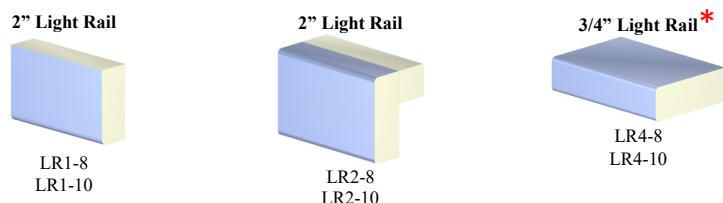
Counter Trim



Base Moldings



Light Rail



Check for species availability, cost and lead time

*Only accessories selected are available in TFL

Filler*



F131	F142	F196
F231	F242	F296
F331	F342	F396
F431	F442	F496

F1108	F1120
F2108	F2120
F3108	F3120
F4108	F4120

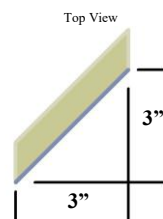


Angled Filler*

Filler with 45° angle on ends



AF331
AF342

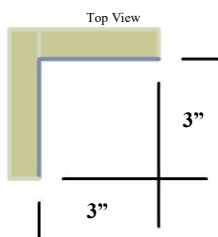


Corner Filler*

Filler with 90° angle



CF331
CF342

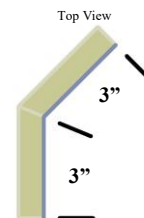


135° Filler

Filler with 135° angle

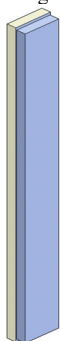


AF31-135
AF42-135

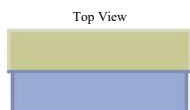


Overlay Filler*

Finished all sides filler
Edge detail matches door edge
Specify if fir down gap is needed



OF331
OF342
OF396



Universal Filler*

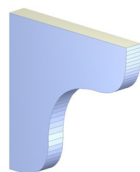
Filler finished on the face and 1 front edge
3/4 * 3/4 nailer installed on back



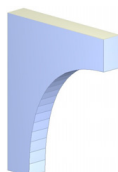
UF331
UF342
UF396



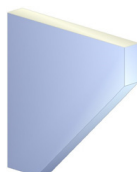
Corbels



CBLA6
CBLA9
CBLA12



CBLT3*6
CBLT6*10
CBLT9*12



CBLB6
CBLB9
CBLB12



CBLC3*6
CBLC6*10
CBLC8*12



CBLF3*6
CBLF6*10
CBLF8*12

* Only CBLB available in TFL.
CBLB in TFL is 3/4" thick

Check for species availability, cost and lead time

**Only accessories selected are available in TFL*

Posts

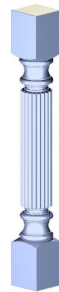


POST SQUARE 3.5*34.5
POST SQUARE 3.5*35.5
POST SQUARE 3.5*40.5
POST SQUARE 5*34.5
POST SQUARE 5*35.5
POST SQUARE 5*40.5

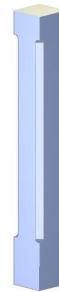
**TFL will show
banded seams*



POST ISALNDER 3.5*34.5
POST ISALNDER 3.5*35.5
POST ISALNDER 3.5*40.5
POST ISALNDER 5*34.5
POST ISALNDER 5*35.5
POST ISALNDER 5*40.5



POST REEDED 3.5*34.5
POST REEDED 3.5*35.5
POST REEDED 3.5*40.5
POST REEDED 5*34.5
POST REEDED 5*35.5
POST REEDED 5*40.5



POST CHAMFERED 3.5*34.5
POST CHAMFERED 3.5*35.5
POST CHAMFERED 3.5*40.5
POST CHAMFERED 5*34.5
POST CHAMFERED 5*35.5
POST CHAMFERED 5*40.5



POST TAPERED 3.5*34.5
POST TAPERED 3.5*35.5
POST TAPERED 3.5*40.5

Two-sided taper



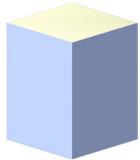
POST MISSION 3.5*34.5
POST MISSION 5*34.5



POST SHAKER 3.5*36

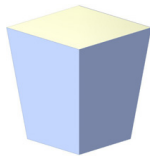
Feet

FOOT BLOCK



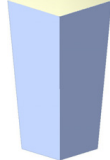
3 * 4

FOOT TAPER



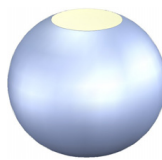
3-1/2 * 4
Four-sided taper

FOOT TAPER 2



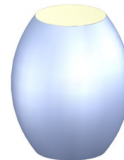
2-11/16 * 6
Two-sided taper

FOOT ROUND



4-7/8 * 4

FOOT EGG



3-3/8 * 4

FOOT APPLE



3-5/16 * 4

FOOT ENGLISH
COUNTRY



3-1/4 * 4

Filler Plant-On



HALF DOWELL 36
HALF DOWELL 48
HALF DOWELL 96

1-3/8 * 3/4



HALF FLUTE 36
HALF FLUTE 48
HALF FLUTE 96

1-3/8 * 3/4



HALF REED 36
HALF REED 48
HALF REED 96

1-3/8 * 3/4



END 10

2 * 1 * 10



END 5

2 * 1 * 5



SPOOL

1-7/8 * 1 * 2-1/2

Appliques



CLASSIC 16*6
CLASSIC 24*16



ROSE 16*6
ROSE 24*16



GRAPE 16*6
GRAPE 24*16



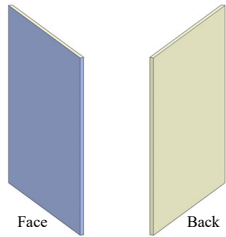
GRAPE 3.5*5

Check for species availability, cost and lead time

***Only accessories selected are available in TFL**

End Skin

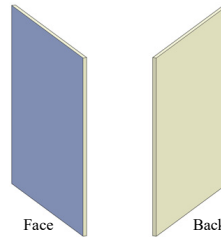
1/4" Thick end skin with finished front edge



E1218	E2418	E1524
E1224	E2424	E1542
E1231	E2431	
E1236	E2435	E2131
E1242	E2442	E2135
E1248	E2448	
E1260	E2460	E3096
E1296	E2496	

Plant on Panel

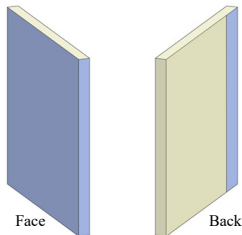
1/4" Thick peninsula panel



PP3035	PP3042
PP3635	PP3642
PP4835	PP4842

Finished End*

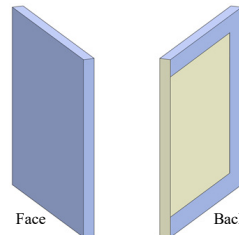
3/4" Thick panel with finished front edge and 3" on back side



FE2435	FE3035	FE4835
FE2496	FE3042	FE4842
		FE4896
FE2535	FE3635	
FE2596	FE3642	

Wall Finished End*

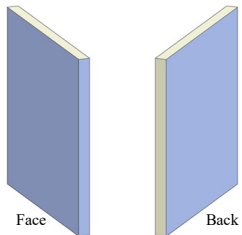
3/4" Thick panel with 3 finished edges (top, bottom and front) and 3" on back side



WFE1212	WFE1512	WFE2412
WFE1224	WFE1524	WFE2424
WFE1236	WFE1536	WFE2436
WFE1248	WFE1548	WFE2448
WFE1260	WFE1560	WFE2460
WFE1312	WFE1612	WFE2512
WFE1324	WFE1624	WFE2524
WFE1336	WFE1636	WFE2536
WFE1348	WFE1648	WFE2548
WFE1360	WFE1660	WFE2560

Wing Panel*

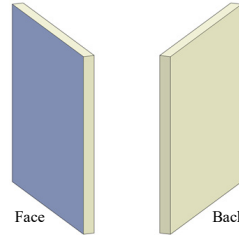
3/4" Thick wing panel finished both sides and front edge



WP1231	WP2424	WP2131
WP1236	WP2431	WP2135
WP1242	WP2435	WP3035
WP1260	WP2442	WP3042
WP1296	WP2460	WP3060
	WP2496	WP3096

Bar Panel*

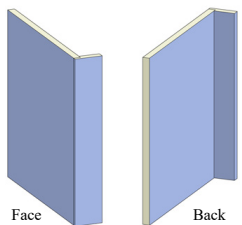
3/4" Thick peninsula panel



BP1224	BP3035
BP1236	BP3042
BP1248	BP3635
BP2135	BP3642
BP2435	BP4835
BP2442	BP4842

Wing Panel*

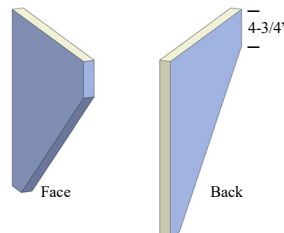
3/4" Thick wing panel finished both sides and front edge
1-1/2" or a 3" nose on front



WP2435*1.5
WP2435*3
WP2496*1.5
WP2496*3

Tapered Wing Panel*

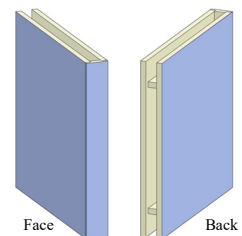
3/4" Thick wing panel finished both sides and front edge



TWP2131
TWP2135
TWP2431
TWP2435

Column*

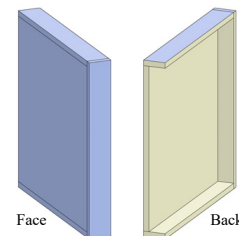
3" Thick panel finished both sides



COLUMN15*42
COLUMN15*60
COLUMN21*31
COLUMN21*35
COLUMN24*35
COLUMN24*42
COLUMN24*60
COLUMN24*96
COLUMN27*35
COLUMN27*60
COLUMN27*96

Wall End Cap*

3/4" Thick panel with nosing



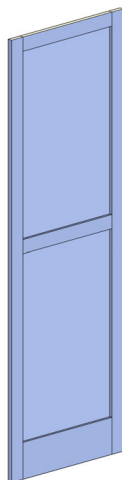
WEC1224*3
WEC1230*3
WEC1236*3
WEC1242*3
WEC1248*3
WEC1251*3
WEC1254*3
WEC1260*3

Check for species availability, cost and lead time

**Only accessories selected are available in TFL*

Double Raised Bar Panel

3/4" thick door panel with square edges and wide bottom rail

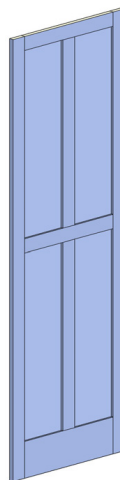


DRBP1284
DRBP1384
DRBP2484
DRBP2584
DRBP2784

DRBP1296
DRBP1396
DRBP2496
DRBP2596
DRBP2796

Double Raised Bar Panel

3/4" thick door panel with square edges and wide bottom rail



DRBP1284-2
DRBP1384-2
DRBP2484-2
DRBP2584-2
DRBP2784-2

DRBP1296-2
DRBP1396-2
DRBP2496-2
DRBP2596-2
DRBP2796-2

Raised End Panel

3/4" thick door panel with square edges

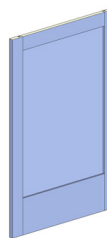


REP1212 REP2412
REP1224 REP2424
REP1236 REP2436
REP1248 REP2448
REP1260 REP2460

REP1312 REP2512
REP1324 REP2524
REP1336 REP2536
REP1348 REP2548
REP1360 REP2560

Raised Bar Panel

3/4" thick door panel with square edges and wide bottom rail

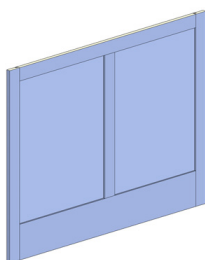


RBP1235 RBP2435
RBP1242 RBP2442

RBP1335 RBP2535
RBP1342 RBP2542

Raised Bar Panel

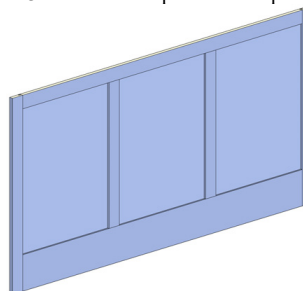
3/4" thick door panel with square edges and wide bottom rail



RBP3635-2
RBP4835-2
RBP3642-2
RBP4842-2

Raised Bar Panel

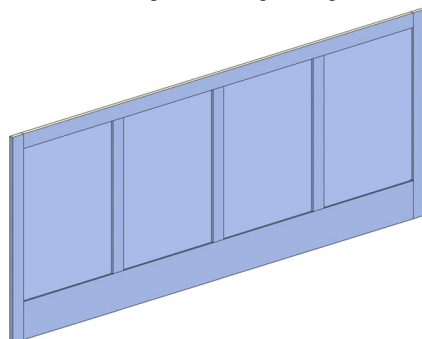
3/4" thick door panel with square edges and wide bottom rail



RBP6035-3
RBP7235-3
RBP6042-3
RBP7242-3

Raised Bar Panel

3/4" thick door panel with square edges and wide bottom rail



RBP7235-4 RBP7242-4
RBP8435-4 RBP8442-4
RBP9635-4 RBP9642-4

Raised Bar Panel Modifications

-FINISH BACK 3"

-FINISH BACK

-WITH FIR DOWN

Check for species availability, cost and lead time

***Only accessories selected are available in TFL**

Custom Veneer Panels

Veneer panels 1/4" or 3/4" thick with custom modifications available in PDBid

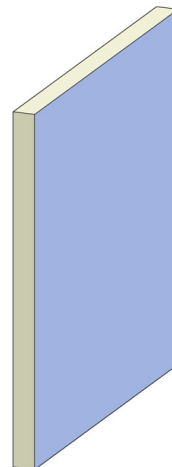
Specify:

- Banded Edges*
- Size*
- Grain Direction*
- Finished Sides
- Detail Options
Bead, V Groove, Shiplap

**See PDBid for detail specifications*



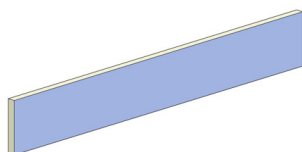
AI Veneer 1/4



AI Veneer 3/4*

Straight Valance*

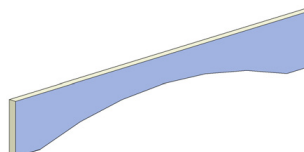
4" tall valance available in foot increments



SV2	SV6
SV3	SV7
SV4	SV8
SV5	

Eyebrow Valance

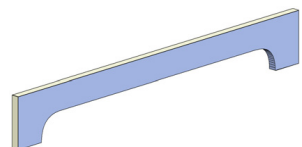
4" tall valance available in foot increments



EV2	EV6
EV3	EV7
EV4	EV8
EV5	

Contemporary Valance

4" tall valance available in foot increments

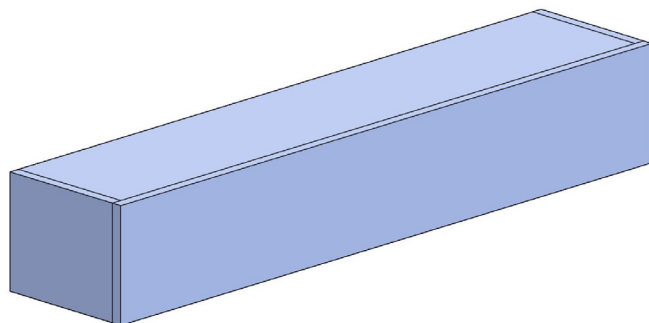


CV2	CV6
CV3	CV7
CV4	CV8
CV5	

Mantels*

Comes standard with return on both sides.

If no return is needed specify "Return right only",
"Return left only" or "No return".



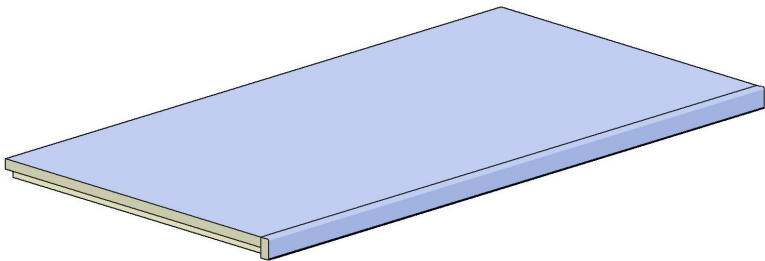
MANTELSQ 36*6*6	MANTELSQ 36*6*8
MANTELSQ 48*6*6	MANTELSQ 48*6*8
MANTELSQ 60*6*6	MANTELSQ 60*6*8

MANTELSQ 36*8*6	MANTELSQ 36*8*8
MANTELSQ 48*8*6	MANTELSQ 48*8*8
MANTELSQ 60*8*6	MANTELSQ 60*8*8

Check for species availability, cost and lead time
*Only accessories selected are available in TFL

1-1/2” Wood Top

Standard wood top is 25-1/2” deep.
If return is needed specify return and side
Example: - RIGHT SIDE : RETURN RIGHT



Example shown:
WOOD TOP 48*25-1/2 NO RETURN

- WOOD TOP 24
- WOOD TOP 36
- WOOD TOP 48
- WOOD TOP 60
- WOOD TOP 72
- WOOD TOP 84
- WOOD TOP 96

Additional Items

- | | | |
|-------------------------------|----------------------------|-----------------------------|
| AI SAMPLE DOOR 12X16 | AI ROT WITH HARDWARE | AI CAPS MAPLE PRINT |
| AI DOOR UPPER | AI DRAWER BOX | AI CAPS HW ALDER |
| AI DOOR LOWER | AI SLIDES FE-SOFT CLOSE | AI CAPS HW CHERRY |
| AI FRONT | AI SLIDES UNDERMOUNT-FE SC | AI CAPS HW MAPLE |
| AI MELAMINE 3/4 | AI SHELF PINS 50 | AI CAPS HW OAK |
| AI MELAMINE 1/4 | AI BANDING-8 | AI SAMPLE CHIP |
| AI TK8 | AI SPEED TAPE-8 | AI GALLON “STAIN NAME” |
| AI HINGE AND PLATE 110° | AI LARGE CAP WHITE | AI QUART “STAIN NAME” |
| AI HINGE AND PLATE 165° | AI SLIDES BASE | AI STRONGHOLD BRACKET 10” |
| AI HINGE AND PLATE SOFT CLOSE | AI SLIDES VANITY | AI TOGGLE SHEETROCK ANCHORS |
| AI HINGE AND PLATE FRAME | AI CASTLE CAPS | |
| AI ROT NO HARDWARE | AI CAPS WHITE | |

ITEM	PAGE
AB	14
ABD	14
ABO	14
AF	39
AF-135	39
AI	44
AI VENEER	43
APC	5
APO	6
AVB	26
AVB-FHD	26
AVC	27
AVD-2E	27
AVD-3	27
AVD-4	27
AVS	26
AVSD-3	27
AVS-FHD	26
AVSI	27
B	12
B BB	16
B CBU	16
BA	15
BAC	15
BB	17
BBK	15
BBK	35
BC	21
BCAC	22
BCS	15
BD-1	17
BD-2	17
B-FHD	12
BK	34
BKD	34
BM4	38
BM41	38
BP	41

ITEM	PAGE
BPP	16
BPPF	16
BRA	15
BS	12-13
BSA	13
BSC	15
BSF	13
BSF-FHD	13
BS-FHD	13
BSI	13
BTB	14
BWB	15
BWC	15
BWR	15
CBLA	39
CBLB	39
CBLC	39
CBLF	39
CBLT	39
CF	39
CLASSIC	40
CM31	38
CM41	38
CM45	38
COLUMN	41
CS	5
CTT	38
CV	43
CW	6
CWD	6
D BB-3	16
D BB-4	16
D CBU-3	16
D CBU-4	16
DD	30
DD	34
D-2E	12
D-3	12

ITEM	PAGE
D-4	12
DE	16
DORG	7
DRBP	42
DRBP-2	42
DTB	14
E	41
END	40
EV	43
F	39
FDE	16
FE	41
FOOT APPLE	40
FOOT BLOCK	40
FOOT EGG	40
FOOT ENGLISH COUNTRY	40
FOOT ROUND	40
FOOT TAPER	40
FOOT TAPER 2	40
FS	7
GRAPE	40
HALF DOWELL	40
HALF FLUTE	40
HALF REED	40
ICM	38
KBT	34
LC	21-22
LCAC	22
LCD	22
LR1	38
LR2	38
LR4	38
LS	14
LSD	14
LSD-S	14
LS-S	14
MANTEL	43
MO	5

ITEM	PAGE
MOS	5
OB	33
OBA	33
OBAC	33
OB-FHD	33
OBK	35
OBRA	34
OCA	23
OCB	23
OCC	23
OCD	23
OCE	23
OCM	38
OCM135	38
OD-2E	33
OD-3	33
OD-3B	33
OF	39
OJC	30
PM	38
POST CHAMFERED	40
POST HALF CAMFERED	40
POST ISLANDER	40
POST MISSION	40
POST REEDED	40
POST SHAKER	40
POST SQUARE	40
POST TAPERED	40
PP	41
RBP	42
RBP-2	42
RBP-3	42
RBP-4	42
REP	42
RHSA	8
RHSB	8
RHSD	8
RHSJ	8

ITEM	PAGE
ROSE	40
SAPC	5
SB	15
SC2	38
SC3	38
SC4	38
SCM	38
SFD	13
SFF	14
SHOE2	38
SHOE3	38
SPOOL	40
SR	7
SRHA	9
SRHD	9
SRHG	9
SRHH	9
SRHI	9
SRHJ	9
SRHK	9
SV	43
TS	38
TTS	38
TWP	41
UF	39
VA	29
VAC	29
VB	27-28
VB-FHD	28
VBK	29
VBK	35
VC	28
VD-3	29
VD-2E	29
VRA	29
VS	28
VSC	29
VSD-3	28

ITEM	PAGE
VS-FHD	28
VSI	29
W	1-2
WAC	3
WBK	8
WBK	35
WC	4
WCP	4
WDC	3
WDO	6
WEC	41
WFE	41
WOCM	38
WOOD TOP	44
WOS	6
WP	41
WPP	7
WPPF	7
WR	7
WRA	3
WRS	7
WRX	7
WS	2
WSC	4
WSCM	38

Notes

This image shows a single sheet of white paper with horizontal ruling lines. The lines are evenly spaced and run across the width of the page. There are no margins, text, or other markings on the paper.

Notes

This image shows a single sheet of white paper with horizontal ruling lines. The lines are evenly spaced and run across the width of the page. There are no margins, text, or other markings on the paper.

Notes

[illegible]

Specification Guide

2023

Popular Design Mill & Cabinet, Inc.

popular-design.com

phone: 801-966-8978

fax: 801-966-8892

popular@popular-design.com

2821 Parkway Boulevard, West Valley City, UT 84119